

OCEANIC 09

INNOVATION FIRST

At Oceanic, Innovation First is not a buzzword. It is our passion and endless pursuit. Innovative engineering and technology are at the core of what makes us who we are today. Every detail of an Oceanic product is designed with a single goal in mind: to enhance your diving experience.

As a company committed to breakthrough thinking, we're continuously looking forward. What technologies will shape the way we dive in the future? How can we design our products to meet the next generation's needs? What can we do to enhance our products and processes to ensure we always exceed your expectations?

Driven by this focused dedication, Oceanic has long been renowned for our leading-edge engineering and design. It's how we've been able to create the remarkable products that you'll find in this catalog. Our 2009 collection is backed by more than three decades of diving science and built on a design philosophy fiercely devoted to Innovation First. We hope you enjoy it.

REGULATORS	2
PERSONAL DIVE COMPUTERS	10
BUOYANCY COMPENSATORS	20
MASKS	28
SNORKELS	32
FINS	36
WETSUITS	40
BAGS	44
ACCESSORIES	48
SUPPORT	52
OCEANIC WORLDWIDE	53

Design: Dept29

Photography: Peter Barrot

PRINTED IN THE USA





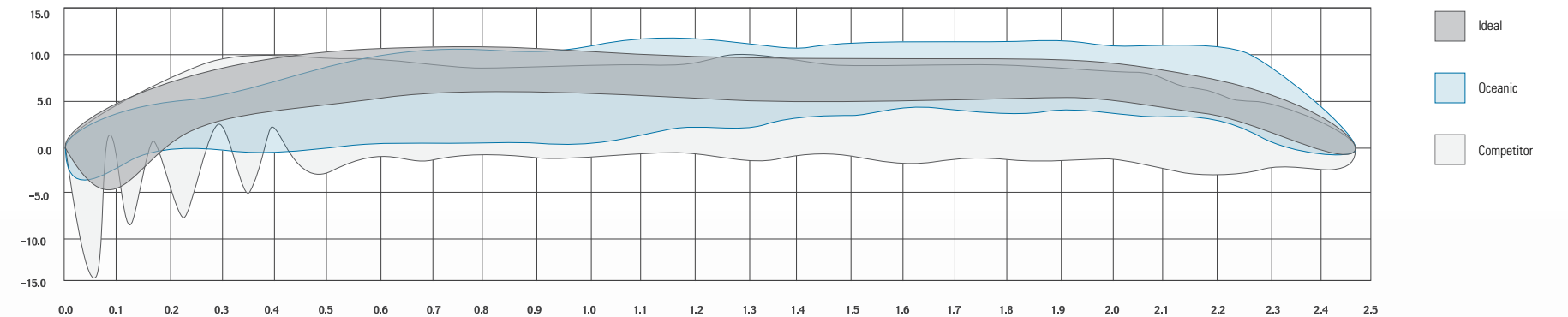
E O S™

- Pneumatically balanced second stage with little or no inhalation resistance
- Diver adjustable inhalation effort for complete control
- Patented Dynamic Adjustment automatically maintains inhalation effort throughout the dive
- Ergonomic Adjustable Venturi Switch (A.V.S.) for simple Dive/Pre-Dive Adjustment

- Stainless steel inline swivel for reduced jaw fatigue and comfort
- Patented Orthodontic Mouthpiece with high-density bite tabs for improved comfort
- Paired with the rugged FDX-10 Over Balanced Diaphragm First Stage featuring DVT (Dry Valve Technology)
- Nitrox compatible to 40%

FDX-10 FIRST STAGE

- High performance over-balanced first stage provides progressively greater intermediate pressure as depth and gas density increases for superior gas delivery under the most extreme conditions
- Forged manufacturing process provides ultimate design control over internal air paths for superior air delivery
- Angled ports for ideal hose routing
- Dry Enviro Kit seals the ambient chamber to prevent freezing and contaminant intrusion
- Equipped with DVT (Dry Valve Technology)



“IDEAL” BREATHING

The amount of energy your regulator requires to move each liter of air is called Work of Breathing (WOB). Lower WOB equals lower effort required to breathe and increased comfort and safety during a dive. The WOB chart above represents a regulator’s performance per standards established by the U.S. Navy. Tests are conducted at 198 feet with approximately 3000-psi supply pressure, 25 breaths per minute of 2.5 liters each.

The chart shows one complete breath cycle, starting with inhalation on the left and continuing along the bottom to the right. Exhalation effort begins on the right and runs across the top to the left. The total area inside the loop formed by the two lines is the regulator’s total WOB - the amount of energy the regulator requires to move each liter of air.

The dark gray represents the “ideal” breathing loop to support a human’s natural breathing cycle – with the absolute minimum inhalation effort, Venturi assist and 10cm backpressure for physiologically ideal exhalation effort.

The blue chart represents the EOS – with a WOB of 0.86. Most notable is how closely the EOS follows the ideal breathing loop identified by our engineers to support a human’s natural breathing cycle. We’re building regulators with the lowest measurable inhalation effort in order to provide air to a diver at the extremes of human capacity – but most importantly, we’re measuring that performance not just by the output of a machine test – but by how you actually breathe.

The light gray loop shows a competitor’s high-performance regulator with nearly the same Work of Breathing value – achieving this however, with significant oscillations during inhalation, indicating instability and “chattering.”



OctoSwiv™

- Exclusive Magnetic Octo Keeper takes the hassle out of locating and attaching to the BC.
- Side exhaust creates the ultimate octo design with no upside down orientation.
- Inline swivel allows left or right hand side mounting allowing for quick and flexible access
- May be mounted over or under your shoulder
- Lies streamlined and flat, reducing drag and tangles on other equipment
- High visibility yellow hose and front cover

MAGNETIC ATTRACTION

The Octopus or Alternate Air Source is a necessary evil. They're rarely used, but invaluable if you need one. Oceanic introduces the perfect combination of magnetic attraction and accessibility with the Octo Swiv with Magnetic Keeper. This innovative Octo exhibits improved convenience through an extraordinarily easy-to-attach Magnetic Keeper.

No more clips. No more Velcro. No more fumbling.





DELTA® 4

- Diver adjustable inhalation effort
- Patented Dynamic Adjustment automatically maintains inhalation effort throughout the dive
- Adjustable Venturi Switch (A.V.S.) for simple Dive/Pre-Dive Adjustment
- Patented Orthodontic Mouthpiece with high-density bite tabs
- Paired with FDX-10 Over-Balanced Diaphragm First Stage
- Nitrox compatible to 40%



NEO™

- Pneumatically balanced second stage with little or no inhalation resistance
- Ergonomic Adjustable Venturi Switch (A.V.S.) for simple Dive/Pre-Dive Adjustment
- Patented Orthodontic Mouthpiece with high-density bite tabs for improved comfort
- Paired with the compact CDX-5 Over-Balanced Diaphragm First Stage
- Nitrox compatible to 40%



FDX-10™ DVT FIRST STAGE

- High performance over-balanced first stage provides progressively greater intermediate pressure as depth and gas density increases for superior gas delivery under the most extreme conditions
- Forged manufacturing process provides ultimate design control over internal air paths for superior air delivery
- Angled ports for ideal hose routing
- Dry Enviro Kit seals the ambient chamber to prevent freezing and contaminant intrusion
- Nitrox compatible to 40%
- Equipped with DVT (Dry Valve Technology)



GT 3™

- Diver adjustable inhalation effort
- Patented Dynamic Adjustment automatically maintains inhalation effort throughout the dive
- ABS composite construction for rugged durability and light weights
- Patented Orthodontic Mouthpiece reduces jaw fatigue
- Paired with the compact CDX-5 Over-Balanced Diaphragm First Stage



CDX-5™ DVT FIRST STAGE

- High performance over-balanced first stage provides progressively greater intermediate pressure as depth and gas density increases for superior gas delivery under the most extreme conditions
- Dry Enviro Kit seals the ambient chamber to prevent freezing and contaminant intrusion
- Nitrox compatible to 40%
- Equipped with DVT (Dry Valve Technology)



ALPHA® 8

- The best price-to-performance ratio in its class
- Designed to perform to the U.S. Navy's Class A standard at 198 feet
- Unmatched reliability and easy maintenance
- Paired with PX-3 Balanced Piston First Stage



ALPHA® 8 SPORT

- The best price-to-performance ratio in its class
- Designed to perform to the U.S. Navy's Class A standard at 198 feet
- Unmatched reliability and easy maintenance
- Paired with SP-5 First Stage



NEO™ OCTO

- Pneumatically balanced second stage ideally suited for use with overbalanced diaphragm first stages
- A.V.S. Vane switch prevents freeflow when not in use
- High visibility yellow hose and front cover



ALPHA 8® OCTO

- Economical price and small size
- High visibility yellow hose and front cover



PX-3™ FIRST STAGE

- Flow-through balanced first stage provides extremely high and smooth air delivery under extreme conditions
- Low pressure port swivel provides versatile positioning of hoses
- Nitrox compatible to 40%
- Equipped with DVT (Dry Valve Technology)



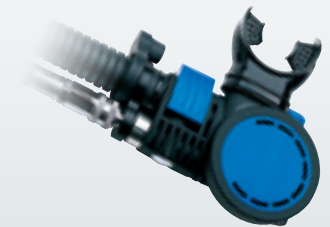
SP-5™ FIRST STAGE

- Flow-by piston first stage exceeds European CE performance standards and outperforms every competitive regulator in its class
- Nitrox compatible to 40%
- May be equipped with or without DVT (Dry Valve Technology)



SLIMLINE™ 2 OCTO

- Flat design reduces drag and bulk
- Tough housing and rubber front cover will provide years of trouble-free diving
- Large high visibility purge button is easily identified and accessed in an emergency
- High visibility yellow hose



AIR XS™ 2 OCTO INFLATOR

- Compact, integrated design eliminates the bulk of a traditional octo and hose
- The Air XS 2 is always right where you need it
- Ergonomic design for ease of use
- Optional integrated pull-ball allows activation of the cable exhaust valve while using the Air XS 2

FEATURES & FUNCTIONS	EOS	DELTA 4	NEO	GT 3	ALPHA 8	ALPHA 8 SPORT	OCTO SWIV MAG	SLIMLINE 2	AIR XS 2
Valve Type	DEMAND	DEMAND	DEMAND	DEMAND	DEMAND	DEMAND	DEMAND	DEMAND	DEMAND
Adjustment	KNOB/PRE-DIVE SWITCH	KNOB/PRE-DIVE SWITCH	PRE-DIVE SWITCH	KNOB	N/A	N/A	N/A	N/A	N/A
Balancing System	PNEUMATIC	MECHANICAL	PNEUMATIC	MECHANICAL	N/A	N/A	N/A	N/A	N/A
Integrated Purge Button	YES	YES	YES	YES	YES	YES	YES	YES	YES
Mouthpiece	ORTHODONTIC W/TABS	ORTHODONTIC W/ TABS	ORTHODONTIC W/TABS	ORTHODONTIC	ORTHODONTIC	ORTHODONTIC	ORTHODONTIC	STANDARD	ORTHODONTIC
Nitrox Compatibility	STANDARD TO 40%	STANDARD TO 40%	STANDARD TO 40%	STANDARD TO 40%	STANDARD TO 40%	STANDARD TO 40%	STANDARD TO 40%	STANDARD TO 40%	STANDARD TO 40%
Ambidextrous	NO	NO	NO	NO	NO	NO	YES	NO	NO
Integrated Swivel	YES	NO	NO	NO	NO	NO	YES	NO	NO
Weight (without hose)	6.4 OUNCES	6.8 OUNCES	5.7 OUNCES	5.8 OUNCES	6.0 OUNCES	6.0 OUNCES	5.8 OUNCES	5.1 OUNCES	7.9 OUNCES
Dimensions (front profile)	2.65 INCHES	2.67 INCHES	2.65 INCHES	2.67 INCHES	2.9 INCHES	2.9 INCHES	3 INCHES	3.4 INCHES	3.9 INCHES
Minimum Cracking Effort	DIVER ADJUSTABLE	DIVER ADJUSTABLE	1.0 CIW	DIVER ADJUSTABLE	1.1 CIW	1.1 CIW	1.5 CIW	1.5 CIW	1.5 CIW
Factory Set Inhalation Effort	0.0 - 2.5 CIW	0.0 - 2.5 CIW	1.2 - 1.4 CIW	0.0 - 2.5 CIW	1.2 - 1.4 CIW	1.2 - 1.4 CIW	1.5 - 2.0 CIW	1.5 - 2.0 CIW	1.6 - 2.2 CIW
Work of Breathing	.86	.90	1.12	.98	1.23	1.43	2.17	2.76	2.86
First Stage	FDX-10 DVT	FDX-10 DVT	CDX-5 DVT	CDX-5 DVT	PX-3 DVT	SP-5	N/A	N/A	N/A
Limited Lifetime Free Parts Replacement Program	YES	YES	YES	YES	YES	YES	YES	YES	YES

PNEUMATICALLY BALANCED VALVE

The pneumatically balanced second stage reduces breathing resistance to near zero with a balanced valve seat designed to respond to the slightest inhalation.

A pneumatically balanced second stage actually has (or can have) the same initial crack opening effort as a mechanically balanced valve but the spring force of a pneumatically balanced second stage is lighter so it's spring rate is also lower. Therefore the force required to open the valve farther as flow increases is less than that required for a mechanically balanced second stage with a higher rate spring.

PATENTED DYNAMIC ADJUSTMENT

A common objection to adjustable second stages is that divers can't imagine themselves twisting and turning a knob as they descend and ascend through the depths. Oceanic's mechanically balanced valve with Dynamic Adjustment maintains your set breathing resistance throughout the dive.

A.V.S. (ADJUSTABLE VENTURI SWITCH) DIVE/PRE-DIVE SWITCH

The A.V.S. deflector vane either diverts airflow from the valve directly to the mouthpiece, producing effortless Venturi-assisted inhalation, or creates enough resistance to prevent free flow on the surface.

DIVER ADJUSTABLE INHALATION EFFORT

Most downstream demand valve regulators are calibrated during manufacturing to a single, 'middle of the road' operation. Whether finning up current at 100+ feet or merely snorkeling out to the dive site, this factory adjustment may not be optimal for the wide variety of demands we place on our equipment. A simple twist of the adjustment knob enables complete control. Set the inhalation requirement to near zero when you need ultimate performance, or tune it for greater resistance as conditions or preferences change.

STAINLESS STEEL INLINE SWIVEL

Ever notice that nearly every picture you see of a diver, their regulator looks like it's not the least bit comfortable? Select Oceanic models feature an ergonomically designed stainless steel (no plating) in-line swivel for ultimate comfort.

PATENTED ORTHODONTIC MOUTHPIECE

To further reduce jaw fatigue, Oceanic regulators feature a patented Orthodontic Mouthpiece, designed to accommodate the natural overbite of the human jaw. Select models also feature high-density bite tabs for increased comfort.

FEATURES & FUNCTIONS	FDX-10 DVT	CDX-5 DVT	PX-3 DVT	SP-5
Valve Type	BALANCED DIAPHRAGM	BALANCED DIAPHRAGM	BALANCED PISTON	UNBALANCED PISTON
Primary Material	FORGED MARINE BRASS	MARINE BRASS	MARINE BRASS	MARINE BRASS
Low Pressure Ports	4	4	5	4
High Pressure Ports	2	2	2	1
DVT (Dry Valve Technology)	YES	YES	YES	OPTIONAL
Nitrox Compatibility	STANDARD TO 40%	STANDARD TO 40%	STANDARD TO 40%	STANDARD TO 40%
DIN Fitting	OPTIONAL	OPTIONAL	OPTIONAL	OPTIONAL
Environmental Protection	YES	YES	NO	NO
Weight	28 OUNCES	29 OUNCES	29 OUNCES	26 OUNCES
Factory Set Intermediate Pressure Range	138-142 PSI	138-142 PSI	140-145 PSI	140-145 PSI
Pressure Drop	9 PSI	20.1 PSI	19.5 PSI	13 PSI
Limited Lifetime Free Parts Replacement Program	YES	YES	YES	YES

OVER-BALANCED DIAPHRAGM FIRST STAGE.

An over-balanced first stage provides progressively greater intermediate pressure as depth and gas density increases. The result is superior gas delivery under the most extreme conditions.

FORGED FIRST STAGE BODY

Formed under heat and pressure in precise closed dies produces superior dimensional accuracy that is repeatable, part to part and lot to lot. The Forged process provides more design flexibility than traditional machining processes – ultimately, in the case of the FDX-10, giving us better control over the path of air through the first stage and porting (hose angles) for superior performance and comfort.

DVT (DRY VALVE TECHNOLOGY)

DVT is a revolutionary regulator technology designed to automatically eliminate moisture and contaminants from entering your first stage, even if the dust cap is accidentally left off between dives or during rinsing. DVT eliminates corrosion of critical internal components, bacteria, hose deterioration, and damaged gauges and computers, preventing costly repairs and extending the life and performance of your most important piece of gear.

WORK OF BREATHING

The amount of energy your regulator requires to move each liter of air is called work of breathing (WOB). Lower Work of Breathing equals lower effort required to breathe and increased comfort and safety during a dive.

ENVIRO PROTECTION KIT

Oceanic's Balanced Diaphragm First Stages feature a unique dry Enviro Protection Kit which completely seals all internal components from the harsh environment. This helps prevent internal corrosion and contaminant buildup, leading to more consistent performance between service intervals.

PARTS REPLACEMENT PROGRAM

This program provides free standard replacement parts for your Oceanic regulator. The program includes all Oceanic first stages and second stages. Register your regulator online with OCEANIC, and you are automatically enrolled in the program. There is no additional charge for this program.



DATA MASK™

- Advanced Dive Computer with advanced optics – built directly into your mask
- In-mask Digital Optic System provides a clear, highly magnified image of the LCD, which is viewable regardless of environmental conditions and may be seen clearly by the vast majority of people, regardless of vision
- Allows “Hands-Free Diving” for greater convenience, enjoyment and safety during the dive
- Wireless Air Integrated Technology with patented Air Time Remaining Algorithm
- Air, Nitrox, Gauge and Free Dive Operating Modes
- Audible Alarms with User Acknowledgment™
- Adjustable backlight intensity may be set on the surface or underwater
- Advanced User Settings & Options
- Diver Replaceable Batteries
- Includes: Transmitter, Batteries, Protective Case, USB PC Interface Cable and Software, Operating Manual, QuickStart Guide (on CD), Laminated Review Card, McNett® MicroNet™ Towel, Sea Buff™ Pre-Cleaner and Sea Gold™ Anti-fog

HANDS FREE DIVING

It seems ridiculous to explain to someone that looking at their watch or console takes so much effort that this mask is a great benefit - but after diving it, you quickly begin to realize just how much of a distraction monitoring your instruments actually is – and how liberating diving “hands-free” can be.

Your hands are free to work the controls of your camera and your mind is free to focus on the dive because all your dive-critical data: current depth, cylinder pressure, dive time, dive time remaining and a nitrogen tissue-loading bar graph – is displayed right where you can see it at all times.

Before you complete the thought “I wonder how much air I have?” or “How deep am I?” or “Am I ascending too fast?” – You have the answer – instantly. Imagine how enjoyable – and safe it is to complete an entire dive without taking your eyes off the reef, ever.



- A. FULL-SEGMENT DISPLAY
- B. MAIN / AIR OR NITROX DIVE
- C. MAIN / GAUGE MODE
- D. ALTERNATE 1
- E. ALTERNATE 2
- F. ALTERNATE 3
- G. SAFETY STOP PROMPT





A. Full Segment Display
 B. Digital Watch Select Function
 C. Set Mode / Audible Alarms
 D. Dive / Main
 E. Dive / Alternate

F. Deco Stop / Main
 G. Deco Stop / Alternate
 H. Message Box / Turn Pressure Alarm
 I. Gauge Mode / Surface
 J. Gauge Mode / Main

K. Gas Switch / Buddy Pressure Check
 L. Buddy Pressure Check / Result
 M. Digital Compass / Full Segment Display
 N. Digital Compass / Surface North Mode
 O. Digital Compass / Main Reference Mode

P. Free Dive Mode / Surface
 Q. Free Dive Mode / Main (Countdown timer ON)
 R. "Last Dive" Display
 S. History / Main
 T. History / Alternate

OC1™

- Precision Digital Compass including North, and reference modes and declination adjustment
- Titanium Housing
- Firmware updates - may be updated with the latest operating code revision
- Digital Watch, Air, up to 3-mix Nitrox, Gauge and Free Dive Modes
- Max Depth 660ft / 200m
- Dot Matrix Display provides superiority readability and intuitive user-interface
- Wireless Air Integrated Technology with Full-Time Air Time Remaining Display
- Switch between 3 independent transmitters, with up to 3 Nitrox mixes to 100% O₂
- Buddy Pressure Check™ allows you to receive and monitor your Buddy's air pressure

- Advanced watch functions include: Alternate Time Zone, Stopwatch, Lap Timer, Daily Alarm, and Countdown Timer
- Adjustable safety stop time and depth
- History Mode
- OceanLog® PC Download and Settings Upload Software and USB Cable included





ATOM® 2.0

- Air, Nitrox, Gauge and Free Dive Modes
- Switch between up to 3 independent wireless transmitters, tracking up to 3 Nitrox mixes to 100% O2
- Buddy Pressure Check™
- Audible Alarms with Alarm Acknowledgment™
- Diver-Replaceable Batteries™
- Dedicated Free Dive Mode calculates and tracks Nitrogen Tissue Loading – allowing users to alternate between SCUBA and Free Diving
- OceanLog® PC Download and Settings Upload Software and USB V2 Cable included (complete unit with Wireless Transmitter only)



VT3™

- Air, Nitrox, Gauge and Free Dive Modes
- Wireless Air Integrated Technology
- Switch between up to 3 independent transmitters, tracking 3 Nitrox mixes to 100% O2 or your buddy's tank pressure
- SmartGlo® Backlighting
- Adjustable safety stop time and depth
- OceanLog® PC Download and Settings Upload Software and USB V2 Cable included (complete unit with Wireless Transmitter only)
- Diver-Replaceable Batteries™



GEO™

- Air, Nitrox, Gauge and Free Dive Modes
- Audible Alarms with Alarm Acknowledgment™
- Adjustable safety stop time and depth
- OceanGlo® Backlighting
- Optional OceanLog® PC Download and Settings Upload Software and USB V2 Cable
- Diver-Replaceable Battery™



PRO PLUS™ 2

- Your choice of up to 4 dive mode displays may be changed at any time during the dive
- Patented Air Time Remaining algorithm provides extremely accurate time based on current depth and your personal air consumption
- “Turn-Around” pressure prompt
- “Ending” pressure alarm ensures that you return to your exit point with a predetermined reserve
- Safety stop prompt
- Diver-Replaceable Battery™



VEO® 250

- Air, Nitrox and Gauge Modes
- Advanced user settings and options
- Your choice of up to 4 dive mode displays may be changed at any time during the dive
- Audible alarm with flashing LED warning light and Alarm Acknowledgment™
- SmartGlo® Backlighting
- Optional OceanLog® PC Download and Settings Upload Software and USB Cable
- Diver-Replaceable Battery™
- Available as modules, wrist mounts, and 2 or 3 gauge consoles



VEO® 100 NX

- Air and Nitrox Operating Modes
- Easy to learn and use
- “Hockey Puck” module is the same size as most depth gauges for easy and inexpensive console upgrades
- Customize the information displayed during a dive with a press of a button
- Water or manual activation
- Safety stop prompt
- 12-dive log book
- Diver-Replaceable Battery™
- Available as modules, wrist mounts, and 2 or 3 gauge consoles



FEATURES & FUNCTIONS	DATAMASK	OC1	ATOM 2.0	VT3	GEO	PRO PLUS 2	VEO 250	VEO 100 NX
Model Type	Wireless, Air Integrated	Wireless, Air Integrated	Wireless, Air Integrated	Wireless, Air Integrated	Wrist Watch	Air Integrated	Module	Module
Modes of Operation	Air, Nitrox, Gauge and Free Dive	Air, Nitrox, Gauge, Free Dive, and Digital Compass	Air, Nitrox, Gauge and Free Dive	Air, Nitrox, Gauge and Free Dive	Air, Nitrox, Gauge and Free Dive	Air, Nitrox, and Gauge	Air, Nitrox, and Gauge	Air and Nitrox
Operating Buttons	2	4	4	3	4	2	2	1
Mounting Options	Mask	Wristwatch	Wristwatch	Wrist/Retractor	Wristwatch	Console	2 or 3 Gauge Console, Wrist, Hose Mount, Retractor, Module	2 or 3 Gauge Console, Wrist, Hose Mount, Retractor, Module
Activation	Water or Push Button	Water or Push Button	Water or Push Button	Water or Push Button	Water or Push Button	Water or Push Button	Water or Push Button	Water or Push Button
Digital Watch Functions	N/A	Time, Alternate Time, Countdown Timer, Stop Watch, Daily Alarm	Time, Alternate Time, Countdown Timer, Stop Watch, Daily Alarm	N/A	Time, Alternate Time, Countdown Timer, Stop Watch, Daily Alarm	N/A	N/A	N/A
Algorithm Basis	Modified Haldanean / DSAT Database	Modified Haldanean / DSAT Database	Modified Haldanean / DSAT Database	Modified Haldanean / DSAT Database	Modified Haldanean / DSAT Database	Modified Haldanean / DSAT Database	Modified Haldanean / DSAT Database	Modified Haldanean / DSAT Database
Conservative Factor Adjustment	YES	YES	YES	YES	YES	NO	NO	NO
Altitude Algorithm Basis	NOAA	NOAA	NOAA	NOAA	NOAA	NOAA	NOAA	NOAA
O2 Limit Basis	NOAA	NOAA	NOAA	NOAA	NOAA	NOAA	NOAA	NOAA
Tissue Compartments	12 (5 to 480 minutes)	12 (5 to 480 minutes)	12 (5 to 480 minutes)	12 (5 to 480 minutes)	12 (5 to 480 minutes)	12 (5 to 480 minutes)	12 (5 to 480 minutes)	12 (5 to 480 minutes)
Automatic Altitude Adjustment	YES	YES	YES	YES	YES	YES	YES	YES
Decompression Capability	10-60 ft/3-18 m	10-60 ft/3-18 m	10-60 ft/3-18 m	10-60 ft/3-18 m	10-60 ft/3-18 m	10-60 ft/3-18 m	10-60 ft/3-18 m	10-60 ft/3-18 m
Automatic Safety Stop Prompt	YES	YES	YES	YES	YES	YES	YES	YES
Cylinder Pressure and Air Time Remaining	YES	YES – UP TO 3 TRANSMITTERS	YES – UP TO 3 TRANSMITTERS	YES – UP TO 3 TRANSMITTERS	NO	YES	NO	NO
Gas Switch / Buddy Pressure Check	NO	YES	YES	YES	NO	NO	NO	NO
Audible Alarm	YES	YES	YES	YES	YES	YES	YES	NO

IN-MASK DIGITAL OPTIC SYSTEM

In-mask Digital Optic System provides a clear, highly magnified image of your dive data, which is viewable regardless of environmental conditions and may be seen clearly by the vast majority of people, regardless of vision.

DOT MATRIX DISPLAY

Oceanic Personal Dive Computers have long been known for their ease-of-use. Our latest product, the OC1, features an easy-to-read dot matrix display, featuring a redesigned menu system, increased digit size and an alphanumeric “Message Box.”

FIRMWARE UPDATES

Every current Oceanic computer may be updated with the latest operating code revision. These may be operational improvements – or even new features.

WIRELESS AIR INTEGRATION

A transmitter threaded into the first stage high-pressure port continuously sends cylinder pressure data to your Dive Computer. Frequencies are individually coded to allow multiple divers to swim side by side or use up to 3 independent gas supplies without interference from other units. The transmitter and display module are independent and separately powered units, the mask may also be easily used as a standalone, non-air integrated dive computer.

FEATURES & FUNCTIONS	DATAMASK	OC1	ATOM 2.0	VT3	GEO	PRO PLUS 2	VEO 250	VEO 100 NX
Ascent Rate Maximum	30 fpm (<60 ft) 60 fpm (>60 ft) 9 mpm (<18 m) 18 mpm (>18 m)							
Calendar / Clock	DATE/TIME	DATE/TIME	DATE/TIME	DATE/TIME	DATE/TIME	DATE/TIME	DATE/TIME	TIME
Operating Depth (Max)	330 ft/100 m	330 ft/100 m	330 ft/100 m	330 ft/100 m	330 ft/100 m	330 ft/100 m	330 ft/100 m	330 ft/100 m
Operating Depth (Free/Gauge)	330 ft/100 m	660 ft/200 m	330 ft/100 m	399 ft/120 m	330 ft/100 m	330 ft/100 m	399 ft/120 m	N/A
Time to Fly Countdown	YES	YES	YES	YES	YES	YES	YES	YES
Desat Countdown	YES	YES	YES	YES	YES	YES	YES	YES
High O2 Alarm/Warning	300/240 SOTU/DOTU	300/240 SOTU/DOTU	300/240 SOTU/DOTU	300/240 SOTU/DOTU	300/240 SOTU/DOTU	300/240 SOTU/DOTU	300/240 SOTU/DOTU	300/240 SOTU/DOTU
High PO2 Alarm / Warning	.2 less than user setting	.2 less than user setting	.2 less than user setting	.2 less than user setting	.2 less than user setting	.2 less than user setting	.2 less than user setting	.2 less than user setting
On-Unit Log Capacity	24 DIVES	24 DIVES	24 DIVES	24 DIVES	24 DIVES	24 DIVES	24 DIVES	12 DIVES
PC Interface	INCLUDED	INCLUDED	INCLUDED	INCLUDED	OPTIONAL	OPTIONAL	OPTIONAL	NO
PC Settings Upload	INCLUDED	INCLUDED	INCLUDED	INCLUDED	OPTIONAL	OPTIONAL	OPTIONAL	NO
Download Memory Capacity	512K**	1M**	512K**	512K**	512K**	256K**	256K**	N/A
Pre-Dive Planning Sequence	PUSH BUTTON	PUSH BUTTON	PUSH BUTTON	PUSH BUTTON	PUSH BUTTON	PUSH BUTTON	PUSH BUTTON	SCROLL
Alpha-Numeric Message Box	YES	YES	YES	YES	YES	NO	NO	NO
On-Unit Simulator	NO	NO	NO	NO	NO	YES	YES	NO
Temperature Display	YES	YES	YES	YES	YES	YES	YES	YES
Tissue Loading Bar Graph	YES	YES	YES	YES	YES	YES	YES	YES
Variable Ascent Rate	MESSAGE BOX	BAR GRAPH	MESSAGE BOX	MESSAGE BOX	MESSAGE BOX	BAR GRAPH	BAR GRAPH	BAR GRAPH
No Decompression Time Remaining Display	YES	YES	YES	YES	YES	YES	YES	YES
Air Time Remaining Display	YES	YES	YES	YES	NO	YES	NO	NO
Backlight	Adjustable Intensity	YES	YES	YES	YES	YES	YES	NO

BUDDY PRESSURE CHECK™

Transmitters may be programmed for “SELF” or “BUD” for Buddy - when programmed for “BUD” – your PDC will search for and display pressure of up to two additional transmitters that are within range (4-6 feet).

AUDIBLE ALARMS WITH FLASHING LED WARNING LIGHT

A variety of system and user-customized audible alarms alert you to situations that pose a potential danger, or simply serve as a convenient reminder.

OCEANIC PERSONAL DIVE COMPUTER ALGORITHM

Decompression theory can be trusted only as far as it has been demonstrated by actual test dive data. In 1987, a unique series of experiments were conducted by Diving Science and Technology (DSAT). Commissioned by the Professional Association of Diving Instructors (PADI), these Doppler ultrasound monitored human experiments conducted by Dr. Michael Powell produced the most comprehensive data set that exists for recreational divers to this day. These data were used to validate the PADI Recreational Dive Planner and are the basis of the algorithm used in all Oceanic Personal Dive Computers (PDCs).

FEATURES & FUNCTIONS	DATAMASK	OC1	ATOM 2.0	VT3	GEO	PRO PLUS 2	VEO 250	VEO 100 NX
Diver Replaceable Batteries	YES	YES	YES	YES	YES	YES	YES	YES
Battery Type	CR2 / CR2	CR2450 / CR2	CR2430 / CR2	CR2450 / CR2	CR2430	CR2	CR2450	CR2450
Battery Life*	160 DIVE HOURS	300 DIVE HOURS	300 DIVE HOURS	300 DIVE HOURS	300 DIVE HOURS	300 DIVE HOURS	300 DIVE HOURS	300 DIVE HOURS
Battery Hot Swap	YES	YES	YES	YES	YES	YES	YES	YES
Set "Turn" Pressure Alarm	YES	YES	YES	YES	YES	YES	NO	NO
Set "End" Pressure Alarm	YES	YES	YES	YES	YES	YES	NO	NO
Set F02 (%) Gas 1	AIR, 21-50%	AIR, 21-100%	AIR, 21-50%	AIR, 21-50%	AIR, 21-50%	AIR, 21-50%	AIR, 21-50%	AIR, 21-50%
Set F02 (%) Gas 2	N/A	OFF, 21-100%	OFF, 21-100%	OFF, 21-100%	N/A	N/A	N/A	N/A
Set F02 (%) Gas 3	N/A	OFF, 21-100%	OFF, 21-100%	OFF, 21-100%	N/A	N/A	N/A	N/A
Set Audible Alarm On/Off	YES	YES	YES	YES	YES	YES	YES	NO
Set Max Depth Alarm	YES	YES	YES	YES	YES	YES	YES	NO
Set Elapsed Dive Time Alarm	YES	YES	YES	YES	YES	YES	YES	NO
Set Maximum Nitrogen Tissue Loading Bar Graph Alarm	YES	YES	YES	YES	YES	YES	YES	NO
Set Conservative Factor	YES	YES	YES	YES	YES	NO	NO	NO
Set Dive Time Remaining Alarm	YES	YES	YES	YES	YES	YES	YES	NO
Set Units Of Measurement	YES	YES	YES	YES	YES	YES	YES	YES
Set Time Format (12/24 Hour)	YES	YES	YES	YES	YES	YES	YES	YES
Set Time of Day	YES	YES	YES	YES	YES	YES	YES	YES

PERSONAL CONSERVATIVE FACTOR ADJUSTMENT

When the Conservative Factor is set On, the no-decompression limit times are reduced to values equivalent to those that would be available at the next higher 3000 foot (915 meter) altitude.

PATENTED AIR TIME REMAINING ALGORITHM

You're at 80 feet with 1300 psi remaining in your cylinder - how long before you need to begin an ascent to a shallower depth? Our patented Air Time Remaining feature calculates your current depth, breathing rate, cylinder pressure, ascent time, and decompression status to tell you exactly how much time you can remain underwater.

"THE ULTIMATE ADJUSTABLE ALGORITHM"

Our tissue loading bar graphs provide complete control of your margin of safety for each dive. Want to be a bit more cautious? Make it a personal rule to never enter into the caution zone; or stay one or more pixel away. Now you can even program several of our PDCs to do it for you with our patent-pending Nitrogen Bar Graph Alarm; set it once and let the PDC alert you when your bar graph reaches that level.

SAFETY STOP AUTO COUNTDOWN WITH ADJUSTABLE DEPTH AND TIME

An audible and visual alarm remind you as you approach your programmed safety stop depth and an automatic timer counts down to zero. As in any other dive mode, you still have access to other pieces of information, and there is no penalty should you choose to disregard the safety stop.

FEATURES & FUNCTIONS	DATAMASK	OC1	ATOM 2.0	VT3	GEO	PRO PLUS 2	VEO 250	VEO 100 NX
Set Date	YES	YES	YES	YES	YES	YES	YES	NO
Set Maximum PO2 Alarm	YES	YES	YES	YES	YES	YES	YES	YES
Set F02 50% Default	YES	YES	YES	YES	YES	YES	YES	YES
Set Backlight	INTENSITY	DURATION	DURATION	DURATION	DURATION	DURATION	DURATION	N/A
Set Safety Stop Time and Depth	YES	YES	YES	YES	YES	NO	NO	NO
Set Sampling Rate (Download)	YES	YES	YES	YES	YES	YES	YES	N/A
Set Digital Gauge Mode On/Off	MODE SELECTION	MODE SELECTION	MODE SELECTION	MODE SELECTION	MODE SELECTION	YES	YES	N/A
Set Water Activation On/Off	YES	YES	YES	YES	YES	YES	YES	YES
Set Free Dive Countdown Timer	YES	YES	YES	YES	YES	N/A	N/A	N/A
Set Free Dive 30 sec. Elapsed Dive Time Alarm	YES	YES	YES	YES	YES	N/A	N/A	N/A
Set Free Dive Max Depth Alarm 1	YES	YES	YES	YES	YES	N/A	N/A	N/A
Set Free Dive Max Depth Alarm 2	YES	YES	YES	YES	YES	N/A	N/A	N/A
Set Free Dive Max Depth Alarm 3	YES	YES	YES	YES	YES	N/A	N/A	N/A

*Battery Life: estimates are based on full-capacity batteries, and continuous usage as described. 7 days per week / 2 dives per day / 1 hour dive time / 2 hour surface interval / 18 hour interval from last dive to the first of the next day. DATAMASK is calculated with the Backlight on continuously.

**Oceanic Personal Dive Computers have user selectable Sampling Rates that determine when data is sampled and stored for subsequent download to associated PC interface programs. More frequent sampling provides more data per dive yet results in storage of fewer dives for download. Use with Air or Nitrox, with or without air integration, dive profiles, Free Diving activities, and other variables may also affect the number of dives that can be stored.

Sampling Rate Options	256K Memory Capacity	512K Memory Capacity	1M Memory Capacity
60 seconds	50-60 Hours	100-110 Hours	200-210 Hours
30 seconds	25-30 Hours	50-55 Hours	100-110 Hours
15 seconds	12-15 Hours	25-30 Hours	50-60 Hours
2 seconds	1.5-2 Hours	4-5 Hours	8-10 Hours
1 second (Free Dive Mode only)	N/A	1.5-2 Hours	

VARIABLE ASCENT RATE INDICATOR"

Some computers simply flash an icon, telling you that you're ascending too quickly. Oceanic's Variable Ascent Rate Indicator acts as a speedometer, allowing you to very precisely control your ascent rate. Oceanic PDCs also feature a depth-dependant ascent rate, allowing increased rates at deeper depths and providing additional safety as you near the surface.

ADVANCED FREE DIVE MODE

Oceanic has designed the only Free Diving Computer to calculate and track Nitrogen Tissue Loading, allowing you to switch between SCUBA dives and Free Dives on the same dive day. Dive Time is displayed in seconds and minutes. Custom audible alarms include Elapsed Dive Time, Countdown Timer and (3) Independent Max Depth Alarms.

GAUGE MODE

Divers using advanced breathing gases or diving beyond the limits of the dive computer may utilize these instruments as an advanced digital depth gauge and bottom timer with detailed PC Interface.



EXCURSION™

- The ultimate “Crossover” BC – lightweight for travel with high lift and weight capacity for the demands of local diving
- Patented BioFlex® rear inflation bladder provides 45 lbs. (58 lbs. optional) of lift and minimal drag when deflated
- Cordura® construction for unsurpassed durability and fade resistance
- Reinforced contoured shoulders, padded backpack with lumbar support and an adjustable-position sternum strap ensure comfort and stability
- QLR Integrated Weight System accommodates up to 20 lbs. plus dual 5 lbs. rear weight pouches for improved in-water positioning
- Rolled Neoprene Neck Collar for ultimate comfort
- Pre-bent welded stainless steel D-rings
- Integrated instrument retractor mount (retractor not included) and Spinner Knife and/or Utility Pocket mounting grommets on both the left or right
- Zippered drop-down pocket

BIOFLEX®

BioFlex is an extraordinary fabric, which stretches, fully inflated up to 30% over conventional nylon or polyurethane BC materials. The idea being that if a material could stretch while remaining airtight, you could make smaller air cells, creating less bulk and drag underwater while achieving high volumes of lift when required.

BioFlex eliminates chest squeeze, conforms to the diver’s body and provides a slim, body hugging profile when not inflated – cutting drag significantly underwater.



Hera™

- Patented Custom Fit Harness with multi-position shoulder straps and cummerbund that delivers custom comfort for women of all sizes
- Hybrid bladder combines the benefits of both rear inflation and jacket style BCs
- Cordura® construction for unsurpassed durability and fade resistance
- QLR Integrated Weight System accommodates up to 20 lbs. plus dual 5 lbs. rear weight pouches for improved in-water positioning.
- Carrying handle and tank positioning strap
- Weight pockets are at a slight downward angle to aid self-loading
- Contoured in all the right places
- Reinforced shoulders, padded backpack and an adjustable position sternum strap ensure comfort and stability
- Pre-bent welded stainless steel D-rings
- Integrated instrument retractor sleeve (retractor not included) and Spinner BC Knife mounting grommets

CUSTOM FIT HARNESS

More than 300 female divers, instructors and Oceanic Dealers participated in a detailed survey to help develop the ultimate women's-specific BC design. Time and time again, we heard that first and foremost, you want a BC designed to fit you – not just a smaller, pink version of a male BC.

The Hera features an innovative Custom Fit Harness which provides multi-position torso height and cummerbund adjustments, delivering individual comfort for women of all shapes and sizes.





PROBE™ LX

- Heavy-duty tech-oriented features in a jacket style
- High lift capacity and minimal drag when deflated with patented BioFlex® bladder
- Cordura® construction for unsurpassed durability and fade resistance
- QLR® Integrated Weight System accommodates up to 20 lbs. plus dual 5 lbs. rear weight pouches for improved in-water positioning
- Front operated rear pull-dump
- Pre-bent welded stainless steel D-rings
- Integrated instrument retractor mount (retractor not included) and Spinner BC Knife mounting grommets
- 2 oversized zippered main pockets
- 2 zippered utility pockets easily accommodate a light, extra mask, pocket snorkel, reel, or signaling device



CRUZ™

- Rugged design and high lift capacity for local diving plus packs flat for travel
- Durable, fadeless Cordura® construction
- Equipped with two trim weight pockets and Oceanic's QLR® Integrated Weight System
- Ergonomic power inflation/deflation with right shoulder and lower pull-dump control
- Easy to use large main zippered pockets
- Strategically placed stainless steel grommets for your accessories



ISLANDER™ 2

- Weighs less than 7lbs.
- Low profile rear inflation bladder for minimal drag
- Cordura® construction for unsurpassed durability and fade resistance
- Includes 2 carabiner clips with 16 attachment points for easy, one-handed accessory attachment
- Integrated Weight System accommodates up to 14 lbs. plus dual 5 lbs. cylinder band weight pouches for improved in-water positioning
- Integrated instrument retractor mount (retractor not included) and Spinner BC Knife mounting grommets on either the left or right



OCEANPRO®

- QLR® Integrated Weight System accommodates up to 20 lbs.
- Integrated backpack with carrying handle
- Optional dual 5 lbs. cylinder band weight pouches for improved in-water positioning
- Tank positioning strap
- Lower pull-dump
- Easy to adjust quick release shoulder adjustments
- Strategically placed plastic D-ring attachment points
- Sternum strap



FEATURES & FUNCTIONS	EXCURSION	PROBE LX	HERA	CRUZ	ISLANDER 2	OCEANPRO
Type	REAR INFLATION	JACKET	HYBRID	JACKET	REAR INFLATION	JACKET
Air Cell Material	BIOFLEX®	BIOFLEX® / 1000 DENIER CORDURA®	FADELESS 500 DENIER NYLON	1000 DENIER CORDURA®	FADELESS 500 DENIER NYLON	FADELESS 500 DENIER NYLON
Shoulder Panel Material	1000 DENIER CORDURA®	1000 DENIER CORDURA®	1000 DENIER CORDURA®	1000 DENIER CORDURA®	1000 DENIER CORDURA®	1000 DENIER CORDURA®
Pocket Panel Material	1000 DENIER CORDURA®	1000 DENIER CORDURA®	1000 DENIER CORDURA®	1000 DENIER CORDURA®	1000 DENIER CORDURA®	1000 DENIER CORDURA®
Reflective Piping	YES	YES	NO	NO	YES	NO
Main Pockets / Closure	DROP DOWN / ZIPPER	ZIPPER	ZIPPER	ZIPPER	ZIPPER	2 / VELCRO®
Accessory Pockets / Closure	N/A	ZIPPER	N/A	N/A	N/A	N/A
Max Dumpable Integrated Weight	20 LBS. QLR	20 LBS. QLR	20 LBS. QLR	20 LBS. QLR	14 LBS.	20 LBS. QLR
Max Non-Dumpable Rear Weight Pockets	10 LBS.	10 LBS.	10 LBS.	10 LBS.	10 LBS.	(Optional) 10 LBS.
Padded Backpack	YES	YES	YES	YES	YES	YES
Lumbar Support	YES	YES	NO	NO	NO	NO
Carrying Handle	YES	YES	YES	YES	YES	YES
Tank Positioning Strap	YES	YES	YES	YES	YES	YES
Molded Tank Cradle / Anti-Slip Pad	YES	YES	YES	YES	YES	YES
Stainless Steel D-rings	5	7	6	1	2 CARABINERS WITH 16 ATTACHMENT POINTS	N/A
Plastic D-rings	N/A	N/A	N/A	2	N/A	8

PATENTED QLR (QUICK LOCK & RELEASE) WEIGHT INTEGRATION SYSTEM

Your weights stay in position throughout the dive and do not shift around affecting buoyancy or position in the water. Best of all, our patented "positive-lock" system helps to ensure that they will stay put.

1000 DENIER CORDURA® CONSTRUCTION

Most exterior panels and abrasion points benefit from the toughness of Cordura®, a high-performance, super-durable fabric. It's resistant to abrasions, tears and scuffs – tough stuff that will hold up to years of extreme diving and keep that new look longer.

TRAVELING LIGHT – TRAVEL SPECIFIC OR “CROSSOVER”

In response to tightening airline restrictions, and more and more divers deciding to leave their bulky BCs at home, Oceanic developed a specific travel BC – the Islander 2 - weighing in at less than 7 lbs. We take it a step further, and apply many of the same design objectives to other BCs in the line. Products like the Excursion, Hera, Cruz, and OceanPro all weigh less than 9 lbs – but also feature increased lift and integrated weight capacity, making them suitable for both local and travel – or what we like to call “crossover” functionality.



FEATURES & FUNCTIONS	EXCURSION	PROBE LX	HERA	CRUZ	ISLANDER 2	OCEANPRO
Sternum Strap	ADJUSTABLE POSITION	ADJUSTABLE POSITION	ADJUSTABLE POSITION	FIXED	ADJUSTABLE POSITION	FIXED
Depth Compensating Cummerbund	YES	YES	YES	NO	YES	NO
Right Shoulder Pull-Ball Exhaust	NO	YES	YES	YES	NO	NO
Front Operated Rear Pull-Ball Exhaust	NO	YES	YES	NO	NO	NO
Twin Cylinder Band Adaptor	OPTIONAL	OPTIONAL	NO	NO	NO	NO
Integrated Retractor Mount	YES	YES	YES	YES	YES	NO
Spinner Knife Mount	YES	YES	YES	YES	YES	NO
Crotch Strap	OPTIONAL	NO	NO	NO	NO	NO
Air XS 2 Alternate Inflator	OPTIONAL	OPTIONAL	OPTIONAL	OPTIONAL	OPTIONAL	OPTIONAL
Dry Weight (size: Large)	9.0 LBS.	9.3 LBS.	8.9 LBS.	8.0 LBS	6.7 LBS.	7.1 LBS
Lift Capacity (per CE test protocol)						
XS			19 LBS.	18 LBS.		18 LBS.
SM	45 LBS./OPTIONAL 58 LBS.	19 LBS.	26 LBS.	23 LBS.	25 LBS.	23 LBS.
MD	45 LBS./OPTIONAL 58 LBS.	22 LBS.	34 LBS.	31 LBS.	25 LBS.	31 LBS.
LG	45 LBS./OPTIONAL 58 LBS.	30 LBS.	40 LBS.	38 LBS.	29 LBS.	38 LBS.
XL	45 LBS./OPTIONAL 58 LBS.	37 LBS.		44 LBS.	29 LBS.	44 LBS.
XXL		41 LBS.			29 LBS.	

FADELESS-SOLUTION DIED MATERIALS

Bladders, fabric, binding tape, and webbing are all are US produced materials that are made of Solution dyed yarn. Solution dyed is a process where the yarn is extruded from black material, versus piece dyed. While it is more expensive material – it provides far superior fade resistance.

YKK® ZIPPERS

Used exclusively for strength, durability and corrosion resistance.

ADJUSTABLE, DEPTH-COMPENSATING CUMMERBUNDS

Easily adjusted to fit – we use custom elastic made from material that significantly outlasts common latex rubber. It is also woven with fade resistant coverings.

HOOK AND LOOP

A special weave of hook and loop fastener made specifically for use in water to maintain its strength.

Pioneer

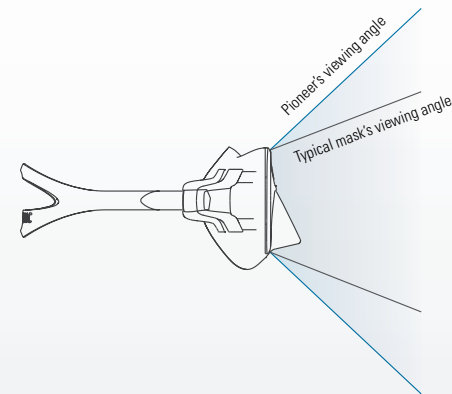
- Ultra-soft silicone skirt molded directly to a rigid inner frame for extremely low internal volume
- Low profile aluminum frame provides added strength and durability
- Low volume, dual lens design with unsurpassed viewing angle
- Skirt Tube Mounted Buckles reduce pressure on the face
- Exclusive one-touch buckle adjustment
- 3D strap design that snugly fits against the head's natural curvature for unprecedented grip and comfort
- SGG DIAMANT ultra-clear tempered glass provides optimum vision and color quality



WHAT A VIEW

Mask designers have worked hard over decades to improve your peripheral view underwater. The most current craze is improving your "downward" vision so that you can better see your equipment.

The Pioneer's super-view lenses provide a stunning peripheral and downward viewing angle – but think for a moment which view is most important while actually diving – when horizontal in the water. It is your "upward" vision that is most important.





ION™ 3X

- Designed for medium to large faces
- Low volume design, with unobstructed panoramic view
- 100% liquid silicone skirt
- Easy-adjust swiveling buckles
- Extremely lightweight and low profile
- Tempered glass lenses for safety
- Neoprene Comfort Strap



ION™ 3

- Designed for smaller faces
- Low volume design, with unobstructed panoramic view
- 100% liquid silicone skirt
- Easy-adjust swiveling buckles
- Extremely lightweight and low profile
- Tempered glass lenses
- Neoprene Comfort Strap



ION™

- Sturdy lightweight frame
- Low volume design for wide field-of-view and easy clearing
- 100% liquid silicone for comfort and long-life
- Tempered glass lenses for safety
- Easy-adjusting buckles for convenience
- Comfort Strap included



ION™ 2

- Same design features as the ION with a high volume purge valve
- 100% liquid silicone for comfort and long-life
- Tempered glass lenses for safety



ION™ 4

- Same great fit and style as the ION with side windows for increased peripheral vision
- Sturdy lightweight frame
- Low volume design for wide field-of-view and easy clearing
- Tempered glass lenses for safety
- 100% liquid silicone for comfort and long-life
- Easy-adjusting buckles for convenience
- Comfort Strap included



NEO™ 2

- Highest grade 100% liquid silicone skirt available for an exceptional fit and long life
- Sturdy lightweight frame
- Low volume design for wide field-of-view and easy clearing
- Tempered glass lenses for safety
- Easy-adjusting buckles for convenience
- Neoprene Comfort Strap



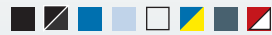
MAKO™

- Highest grade 100% liquid silicone skirt available for an exceptional fit and long life
- Sturdy lightweight frame
- Low volume design for wide field-of-view and easy clearing
- Tempered glass lenses for safety
- Easy-adjusting buckles for convenience
- Neoprene Comfort Strap



SHADOW™ / MINI SHADOW™

- No-frame design reduces weight and provides one of the largest fields-of-view
- Extremely low volume design
- Swiveling, easy-adjusting buckles
- Ideal for hunters and photographers
- Perfect back-up mask as it folds and fits easily in your BC pocket
- Comfort Strap included
- Mini Shadow™ is designed to fit a wide variety of smaller faces
- Tempered glass lenses for safety



For all ION™ Masks



OPTICAL LENSES

Correct your vision underwater without the discomfort and risk of contact lenses. May be easily installed without tools in ION, ION 2 or ION 4 mask.



TRUE ULTRA DRY SNORKEL TECHNOLOGY

The name says it all. Designed to be exactly what its name suggests, the Ultra Dry Snorkel incorporates Oceanic's patented Dry Snorkel Technology into an ultra-low profile product that is ergonomically designed for comfort and function.

This technology utilizes a 100% silicone valve to create a seal when the snorkel is submerged to effectively eliminate water entering the snorkel barrel while achieving superior air flow performance on the surface. Similar designs with a "foam-like" float work in much the same way – but ultimately allow water to enter the snorkel.

UltraDry™

- Patented Dry Snorkel Technology virtually eliminates water entry without sacrificing performance
- Oversized purge valve for easy clearing
- Quick-release swiveling snorkel keeper
- Drop away smooth bore flex mouthpiece
- Replaceable 100% liquid silicone mouthpiece and purge valve
- Mini Version features the same fine qualities as the Ultra Dry, but with a mouthpiece designed for women and young adults





ARID™

A patent-pending deflector helps to keep the Arid as dry as a desert, even in waves and wind.

- Quick-release swiveling snorkel keeper
- Drop away flex mouthpiece
- Replaceable 100% liquid silicone mouthpiece



RESPONSE™

- Efficient exhaust valve for easy clearing
- Quick-release swiveling snorkel keeper
- Drop away flex mouthpiece
- Replaceable 100% liquid silicone mouthpiece



BLAST™

- Hypoallergenic high quality silicone mouthpiece
- Sliding snorkel keeper



POCKET SNORKEL™

For divers that dislike wearing a snorkel but know that they should always be prepared, Oceanic provides an innovative solution. The Pocket Snorkel folds neatly and out of the way in your BC pocket when not in use.





- Patented Nature's Wing® Propeller Fin Technology is up to 30% faster and more efficient, with less effort, stress and strain resulting in greater comfort and control
- Blade manufactured using (4) material compounds for ultimate performance and light weight
- Semi-rigid battens and natural rubber flex channels precisely control the shape of the blade during the fin stroke to optimize power and reduce drag
- Oversized side rails add rigidity and control movement of the blades for increased lift, power and efficiency
- Ergonomically designed foot pocket accommodates virtually all foot sizes and boot styles
- Angled blade for preferred angle of attack
- Easy on/off fin strap with thumb loop
- Easy-adjust quick-release buckles



QUADFLEX™ – ADVANCED COMPOSITE MATERIALS

Control the shape of the blade during the kick cycle and you control water movement – thus maximizing the efficiency and propulsion of the fin.

Our QuadFlex construction features two composite and two natural rubber compounds working together to provide varying levels of rigidity to precisely control the shape of the blade as it travels through the water.

The engineered semi-rigid battens, flex channels and side rails direct water flow off the tips of the fin without allowing water to "spill" from the sides of the blade for uncompromising power and efficiency.





VORTEX® V-12

- Patented Nature's Wing® Propeller Fin Technology
- Duroprene™ and natural rubber materials for ideal flex and memory
- Oversized side rails add rigidity to the oversized blades for increased power and efficiency
- Ergonomically designed foot pocket accommodates virtually all foot sizes and boot styles
- Angled blade for preferred angle of attack
- Easy on/off fin strap with thumb loop
- Easy-adjust quick-release buckles



VORTEX® V-8

- Patented Nature's Wing® Propeller Fin Technology
- Advanced composite materials for ideal flex and memory
- Rigid side rails for increased power and efficiency
- Ergonomically designed foot pocket accommodates virtually all foot sizes and boot styles
- Angled blade for preferred angle of attack
- Easy-adjust quick-release buckles



VIPER™

- Flexible Power Thrust Channel™ directs water off the tip of the blade for improved power and efficiency
- Power Vents™ reduce stress while accelerating water over the blade
- Oversized blade produces increased thrust and propulsion
- Generous yet streamlined foot pocket fits a wide range of boot styles while significantly reducing drag
- Extremely lightweight for increased performance and ease of travel
- Easy-adjust quick-release buckles



VORTEX® V-6

- Patented Nature's Wing® Propeller Fin Technology
- Small size and light weight is ideal for travel
- Independently tested as one of the fastest fins on the market
- Evaprene composite material for increased performance and long life
- Comfortable rubber foot pocket in a wide range of sizes



CARIBE x™

- Award-winning performance
- Flexible center channel improves efficiency and eliminates lateral blade movement
- Ultra lightweight design is ideal for the traveling diver or snorkeler
- Oversized blade provides power with minimal effort
- Soft full foot pocket in a wide range of sizes



FLEX™

- Lightweight design is easy to pack
- Durable nylon blade
- Comfortable foot pocket in a variety of adult and youth sizes



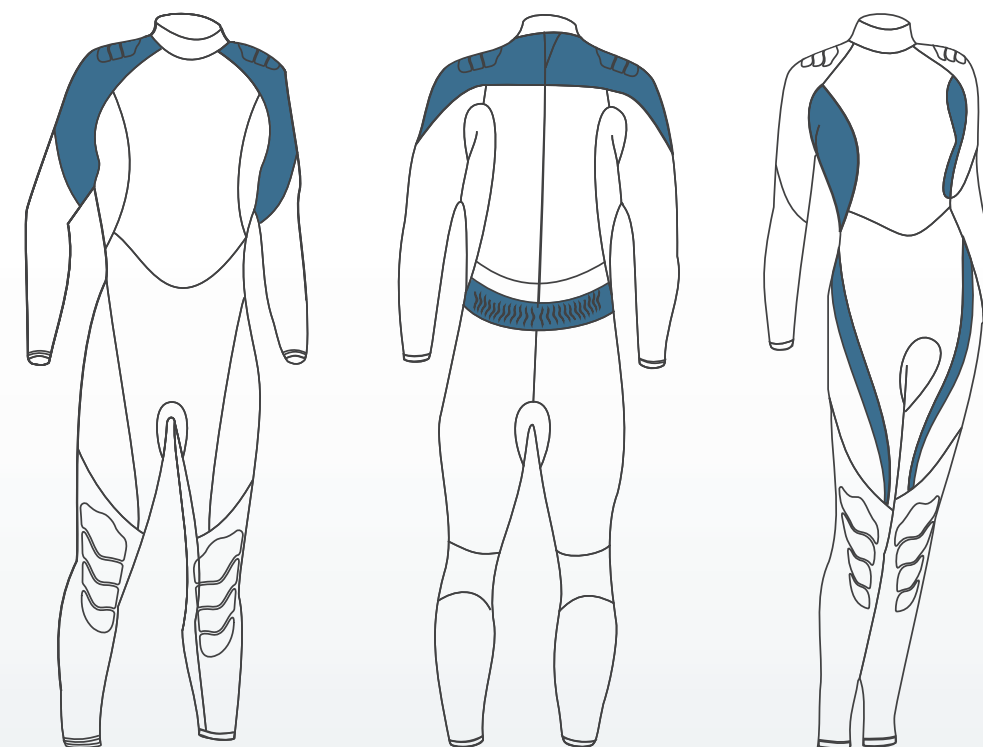
ULTRA™ 3/2

- 5-Point Skin-in Neoprene Seals (wrists, ankles and neck) to reduce water flushing
- OceanSpan® Super-Stretch Neoprene panels in shoulders and lumbar area (male) and hips and bust (female) for ultimate comfort and ease of donning
- High-density neoprene in torso, legs and arms for uncompromising compression resistance for warmth and long-use life
- Adjustable collar for reduced water entry and comfort
- Shoulder panel graphics for exceptional abrasion resistance

OCEANSPAN® SUPER-STRETCH NEOPRENE

Super-Stretch Neoprene offers improved range of movement for ultimate comfort, stretches to accommodate size variations and eases donning and doffing. They're great for surf suits – but not ideal for diving as these materials typically break down and lose their thermal properties faster than other materials with repeated compression.

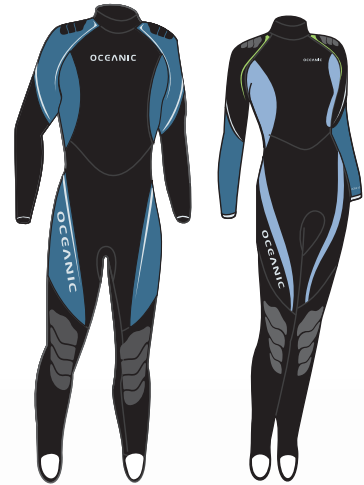
We limit the use of our OceanSpan® Super-Stretch Neoprene to areas where we get the most benefit: in the shoulder and lumbar area of the male suits and hips and bust in the female suits while high-density neoprene is applied in the torso, legs and arms for uncompromising compression resistance for warmth and long-use life.





ULTRA™ 7 MM

- 6-Point Skin-in Neoprene Seals (wrists, ankles, zipper, and neck) to reduce water flushing
- OceanSpan Super-Stretch Neoprene panels in shoulders and lumbar area (male) and hips and bust (female) for ultimate comfort and ease of donning
- High-density neoprene in torso, legs and arms for uncompromising compression resistance for warmth and long-use life
- Adjustable collar for reduced water entry and comfort
- Heavy-duty knee and shin pads for abrasion resistance



ULTRA™ .5 MM

- Stirrups and thumb loops make donning a snap when layering under a thicker suit
- Adjustable skin-in lined collar for reduced water entry and comfort



ULTRA™ 2 MM SHORTY

- 5-Point Skin-in Neoprene Seals (arms, legs and neck) to reduce water flushing
- OceanSpan Super-Stretch Neoprene panels in shoulders and lumbar area (male) and hips and bust (female) for ultimate comfort and ease of donning
- High-density neoprene in torso, legs and arms for uncompromising compression resistance for warmth and long use life
- Adjustable collar for reduced water entry and comfort



NEO-CLASSIC™

- Virtually impenetrable molded sole with non-slip tread and superior arch support
- Reinforced pull tab eliminates stress on neoprene when donning
- 5mm double-glued and blind stitched neoprene construction for longevity and reduced water flow
- Hook and loop zipper flap ensures that the zipper will stay closed securely during the dive



VENTURE™

- Molded sole with non-slip tread
- 5mm double-glued and blind stitched neoprene construction for longevity and reduced water flow
- Corrosion-proof zipper
- Hook and loop zipper flap ensures that the zipper will stay closed securely during the dive



SUNSET™

- Molded sole with non-slip tread
- 3mm double-glued and blind stitched neoprene construction
- Low cut slip on



REEF PRO™

- Hook and loop cinch strap
- Amara® palm provides a high degree of protection, wear resistance and dexterity
- Perforated neoprene upper for increased flexibility and water flow



OCEANPRO® 5.0

- 5mm double-glued and blind stitched construction for longevity and reduced water flow
- Anatomical cut for improved comfort and dexterity
- Screened non-skid grip
- Wide elastic hook and loop closure effectively seals out cold water for warmth



OCEANPRO® 3.0

- 3mm double-glued and blind stitched construction for longevity and reduced water flow
- Anatomical cut for improved comfort and dexterity
- Screened non-skid grip
- Wide elastic hook and loop closure effectively seals out cold water for warmth



DIVE CARGO™

CARGO ULTRA

Designed with ballistic nylon and reinforced wear areas, the Cargo Ultra Bag protects your valuable contents with padding, sturdy sides, and large self-healing YKK zippers.

The main body compartment of the bag provides plenty of space for a full set of dive gear while a secondary semi-dry compartment allows you to organize your clothes and toiletries into a roomy area that seals with a three-pocket mesh divider wall. Four durable "baggage claim" handles provide added convenience on the go.

Fully loaded, the Cargo Ultra maintains superior stability and maneuverability over curbs, tight turns, and stairs courtesy of all-terrain wheels, a 10.5" wheel base, and a 2-position heavy-duty telescoping tow handle.





CARGO ULTRA

- Fully loaded, the Cargo Ultra maintains superior stability and maneuverability over curbs, tight turns, and stairs courtesy of all-terrain wheels on a 10.5" wheel base
- 2-position retractable handle
- Ballistic nylon construction with reinforced wear areas
- Dimensions: 30.5 x 15.5 x 15
- Weight (empty): 12 pounds



CARGO WHEELED DUFFEL

- From airports to boat docks to the beach, the easily-accessible main compartment of this bag accommodates a full set of gear plus clothes and toiletries (or even another set of gear)
- 2-position retractable handle
- Ballistic nylon construction with reinforced wear areas
- Dimensions: 31 x 17 x 13
- Weight (empty): 11.5 pounds



CARGO CARRY-ON

- A compact carry-on with enough room for a long diving weekend
- The main body compartment of the bag provides plenty of space for gear while a secondary semi-dry compartment allows you to organize your clothes and toiletries
- Front Pocket is perfect for an easy-access TSA liquids bag and Boarding Passes
- 2-position retractable handle
- Dimensions: 22.5 x 9 x 14
- Weight (empty): 8 pounds



CARGO MESH BACKPACK

- PVC-coated mesh construction is lightweight yet extremely durable
- Internal semi-dry pocket
- Padded shoulder straps and drawstring closure
- Dimensions: 26 x 7 x 11
- Weight (empty): 1.8 pounds



CARGO MESH DUFFEL

- PVC-coated mesh construction is lightweight yet extremely durable
- Internal semi-dry pocket
- Corrosion-proof zipper closure
- Dimensions: 26 x 13 x 13
- Weight (empty): 2.5 pounds



CARGO DELUXE REG BAG

- Round shape to reduce hose stress
- Includes shoulder strap and luggage tag
- Dimensions: 11 x 5



CARGO REG BAG

- Includes padded instrument sleeve
- Dimensions: 12 x 12 x 4



- 300 lumens - 5500 degrees Kelvin
- 6061 T6 Aluminum with hard anodized coating
- Tri-lens reflector with a 6° beam angle
- Tempered glass lens with Fresnel dome to allow more unfiltered light
- Double sealed mechanical switch with Security Lock Pin
- 8 hour burn time on (3) C-cell batteries
- 10,000 hour lifespan LED bulbs
- Max Operating Depth: 650ft / 200m
- Double O-Ring Seals
- May be used above water

ULTRA-CLEAR FRESNEL LENS

A 4mm thick Bora Silicate Ultra-Clear Lens with a Fresnel dome equip this light with an unfiltered, focused light matched by any other in its class.

Fresnel lenses have been widely used in solar collectors that concentrate light by refraction. Since it is a flat approximation of a curved lens, a Fresnel lens has less material and weighs less than a corresponding curved lens. This results in dramatically reduced refraction and light transmission loss through the lens.





SPINNER™ BC KNIFE

- Solid 304 stainless steel blades feature razor-sharp smooth and serrated cutting surfaces
- Line cutter and metal butt for signaling
- Available in a sharp or blunt tip
- Compact quick-release sheath features a one-hand release

Mako

- Up to 2-hour run time
- Variable pitch propeller, which can easily be set to any one of nine pitch positions, resulting in a choice of improved thrust and speed or extended runtime
- Control the Mako's direction with just a gentle movement of the arms
- Green, yellow and red LED battery indicator
- Rechargeable battery with quick charge option between dives or a longer, deeper charge can be gained overnight
- Includes battery and charger
- Optional Cruise Seat tow bar



Armed with the largest selection of Oceanic products and staffed with the most knowledgeable diving professionals, Authorized Oceanic Dealers also offer these exclusive benefits:

30-DAY SATISFACTION GUARANTEE

This guarantee warrants that at any time during the first 30 days of purchase, your Oceanic product fails to meet your expectations, that product may be exchanged by a participating Authorized Oceanic Dealer. No questions asked.

LIFETIME REGULATOR PARTS REPLACEMENT PROGRAM

Register your regulator purchased through an Authorized Oceanic Dealer to be automatically enrolled in our LIFETIME REGULATOR PARTS REPLACEMENT PROGRAM, which offers FREE replacement parts for as long as you own your Oceanic Regulator, and have it serviced annually by an Authorized Oceanic Dealer Technician.

XPRESS REPLACEMENT POLICY

Should anything go wrong with your Oceanic product within the first 30 days of purchase, your Authorized Oceanic Dealer is authorized to immediately replace the product over-the-counter. No questions asked.

ONLINE DIVE LOCKER

Register your product purchases online through an Authorized Oceanic Dealer to create your own Dive Locker, a secure area on our web site where you may access and maintain your personal information. Register additional Oceanic product purchases, participate in new product development surveys, update contact information, update Oceanic News preferences, create a Virtual Dive Log, maintain service records, receive service reminders, and more! Most importantly, should Oceanic issue a safety related notice regarding your product, you will be the first to know.

During the setup process or at any time thereafter, you choose exactly what you wish to hear about from Oceanic – or nothing at all if that is your preference. We are committed to respecting your privacy - your email address and all information submitted is considered strictly confidential and is not sold or used for any other purpose.

AUTHORIZED OCEANIC DEALERS HAND PICKED BY US TO SERVE YOU

When you visit an Authorized Oceanic Dealer, you'll get the personal attention you need to select the equipment and accessories that truly fit you and your diving style. Because they understand that when the gear's right, you'll dive more often and have a lot more fun every time you go out.

Their commitment to enhancing your experience even goes beyond the sale, from tuning your gear before you leave the store to mechanical check-ups that ensure your gear dives like the day you bought it.

But most of all, Authorized Oceanic Dealers simply live and breathe diving. It's a dedication that you won't find anywhere else.

Want to see for yourself why an Authorized Oceanic Dealer is the right place to find the right diving equipment for you? Go to **www.BuyOceanic.com** to find an online or local dealer near you.



OCEANIC EUROPE

Am Mittleren Moos 36
D-86167 Augsburg, Germany
+49 (0) 821 810342 0
www.Oceanic.de



OCEANIC UNITED KINGDOM

Pelagic House
Flightway Dunkeswell
Honiton, Devon EX14 4RB
United Kingdom
(44) 1404 891819
www.OceanicUK.com



OCEANIC ASIA-PACIFIC

35 Selegie Road
Parklane Shopping Mall #30-09
Singapore 188307
(65) 6332 0186
www.OceanicAsia.com.sg



OCEANIC AUSTRALIA

4 Scotch Court
Rosebud, Victoria 3939, Australia
(61) 3 5986 0100
www.OceanicAUS.com.au



OCEANIC JAPAN

1-19-5 Motomiya Turumi-Ku
Yokohama Kanagawa-Pref,
Japan 230-0004
(03) 5651 9371
www.Oceanic-jp.com



ISO 9001:2000 is a distinguished global standard of quality management systems, not only in design and manufacturing, but virtually all aspects of company operations. Oceanic and its family of companies are committed to exceeding the requirements for ISO 9001:2000 certification.



In European markets, certain product categories are required to pass rigorous testing standards. All Oceanic products that require testing have surpassed the CE standards.

In addition to our US Headquarters and (6) International Affiliate Companies, Oceanic's superior products and services are available through more than (30) International Distributors and thousands of Authorized Dealers worldwide including: Argentina, the Benelux nations, Brazil, Canada, Chile, China, Colombia, Cook Islands, Costa Rica, Cyprus, Egypt, Ecuador, France, Greece, Guatemala, Hawaii, Honduras, Hong Kong, Iceland, Israel, Korea, Lebanon, Mexico, Micronesia, New Zealand, Norway, Panama, Philippines, Poland, Portugal, Russia, Saudi Arabia, Scandinavia, South Africa, Spain, Switzerland, Taiwan, Thailand, Turkey, Ukraine, United Arab Emirates, Venezuela and more. Please visit our web site for a complete listing and contact information.

While every effort was made to ensure that the information contained in this catalog was accurate at the time of printing, designs, features, component parts and colors are all subject to change. The Oceanic products in this catalog may be covered by one or more United States patents. Oceanic enforces its patented technology actively and will aggressively defend any infringement. No part of this catalog may be reproduced in whole or in part by any medium without the express written consent of Oceanic.

BECAUSE 3/4 OF THE PLANET... IS OCEANIC.

2002 Davis Street,
San Leandro
California, 94577 USA
800-435-3483
www.OceanicWorldwide.com