



OCEANIC[®]

INNOVATION FIRST

2008 PRODUCT GUIDE

OCEANIC

INNOVATION FIRST

Not many diving companies can say they answer to no one. Since its inception in 1972, Oceanic has remained privately owned and operated. This independence is essential to who we are today. After all, it's how we help ideas break through the barriers that conspire against them. It's not a typical outlook in the diving industry, but then again, we're not a typical company. Our 2008 collection is backed by more than three decades of diving science and built on a design philosophy fiercely devoted to Innovation First.

Oceanic has long been known for its innovative engineering and product design. This commitment to thinking "outside-the-box" is how we've been able to create the remarkable products that you'll find in this catalog – including the DataMask with the first ever In-Mask Digital Optic System.

As a company committed to breakthrough thinking, we pursue innovative ideas in all aspects of our business, including our legendary customer service. We stand behind our products with the best support and warranty programs available. Don't just take our word for it – ask others what they think of us on ScubaBoard.com, diving's largest online community.

What technologies will shape the way we dive tomorrow? How can we design our products to meet the next generation's needs? What can we do to enhance our products and processes to ensure we always exceed our customer's expectations? These are questions we ask ourselves every day. It's how we'll ensure other great ideas live on to carry the Oceanic name.



Bob Hollis
Founder and CEO

Design: Dept129

Location Photography: Keith Ibsen

Studio Photography: Peter Barrot

PRINTED IN THE USA

REGULATORS	2
PERSONAL DIVE COMPUTERS	8
BUOYANCY COMPENSATORS	16
MASKS, FINS, SNORKELS	22
WETSUITS, NEOPRENE ACCESSORIES	32
GEAR BAGS	38
ACCESSORIES	42
COMPARISON CHARTS	44
AUTHORIZED OCEANIC DEALERS	49
OCEANIC WORLDWIDE	50

REGULATORS

Over the last 35 years Oceanic Regulators have been proven time and again under the most rigorous professional diving conditions. Divers that make their living underwater do not accept compromise and we don't think any diver should.

Oceanic Regulators are designed and manufactured in our own facilities and offer out-of-the-box Nitrox compatibility, precision machined components, lightweight designs, and most importantly, superior breathing performance that you can depend on.



DVT® (DRY VALVE TECHNOLOGY)

DVT is a revolutionary regulator technology designed to automatically eliminate moisture and contaminants from entering your first stage, even if the dust cap is accidentally left off between dives or during rinsing. Regardless of how carefully you maintain your regulator, water entry is a much more common problem than most divers realize. Most first stage regulators are exposed to corrosive water intrusion either when removed from the cylinder valve between dives or in the rinse tank.

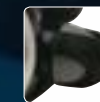
When water enters your first stage, critical internal seals break down and precision-machined metal parts begin to corrode. This inevitably leads to significant performance degradation and expensive repairs. DVT eliminates corrosion of critical internal components, bacteria, hose deterioration, and damaged gauges and computers, preventing costly repairs and extending the life and performance of your most important piece of gear.



OVER-BALANCED DIAPHRAGM FIRST STAGE

A Balanced Diaphragm First Stage is the perfect regulator for extreme diving conditions, such as ice diving or diving in high sediment. The balanced diaphragm first stage design has been the regulator of choice for many divers who find themselves pushing the envelope. The advanced "over-balanced" design of Oceanic's diaphragm first stages provides increased air flow to the second stage as depth increases, compensating for increased air density and demand at greater depths.

In addition, Oceanic's Balanced Diaphragm First Stages feature a unique dry Enviro Protection Kit which completely seals all internal components from the harsh environment. This helps prevent internal corrosion and contaminant buildup, leading to more consistent performance between service intervals.



DYNAMIC ADJUSTMENT

Most downstream demand valve regulators are calibrated during manufacturing to a single, "middle of the road" operation. Whether finning up current at 100+ feet or merely snorkeling out to the dive site, this factory adjustment may not be optimum for the wide variety of demands we place on our equipment. Adjustable second stages provide complete control... set the inhalation requirement to near zero when you need ultimate performance, or tune it for greater resistance as conditions or preferences change.

A common objection to adjustable second stages is that divers can't imagine themselves twisting and turning a knob as they descend and ascend through the depths. If inhalation resistance is set near zero at depth, your ascent would routinely require you to manually increase resistance as ambient water pressure is reduced to prevent free-flow. Oceanic's patented DYNAMIC ADJUSTMENT features a mechanically balanced valve which automatically maintains your preferred breathing resistance throughout the dive. Set it once and the valve adjusts to make breathing as easy at extreme depth as it is at 30 feet - with no additional manual adjustment.

DELTA® 4

EVEN WITH THE BEST-LAID DIVE PLANS

There are times you encounter conditions beyond your control. Sometimes you're caught down current, and face a long surface swim working hard all the way. Or maybe you went deeper than you planned. This highly responsive design provides a high volume of airflow with even the slightest inhalation effort, making it seem nearly effortless to breathe at any depth.

- Diver adjustable inhalation effort
- Patented Dynamic Adjustment automatically maintains inhalation effort throughout the dive
- Adjustable Venturi Switch (A.V.S.) for simple Dive/Pre-Dive Adjustment
- Stainless steel inline ball swivel reduces jaw fatigue
- Patented orthodontic mouthpiece with high-density bite tabs



FDX-10™ DVT FIRST STAGE

- High performance over-balanced first stage provides progressively greater intermediate pressure as depth and gas density increases for superior gas delivery under the most extreme conditions
- Forged manufacturing process provides ultimate design control over internal air paths for superior air delivery
- Angled ports for ideal hose routing
- Dry Enviro Kit seals the ambient chamber to prevent freezing and contaminant intrusion
- Nitrox compatible to 40%
- Equipped with DVT (Dry Valve Technology)

GT 3™

SET IT AND FORGET IT

The GT 3 is the perfect mix of two worlds, since it incorporates the award-winning performance of the Delta 4 with the economical price of the Alpha 8.

- Diver adjustable inhalation effort
- Patented Dynamic Adjustment automatically maintains inhalation effort throughout the dive
- ABS composite construction for rugged durability and light weight
- Patented Orthodontic Mouthpiece for comfort and reduced jaw fatigue

CDX-5™ DVT FIRST STAGE

- High performance over-balanced first stage provides progressively greater intermediate pressure as depth and gas density increases for superior gas delivery under the most extreme conditions
- Dry Enviro Kit seals the ambient chamber to prevent freezing and contaminant intrusion
- Nitrox compatible to 40%
- Equipped with DVT (Dry Valve Technology)



ALPHA® 8

THE ALPHA STANDARD

The standard by which all other entry-level regulators are judged. For recreational divers looking for professional performance at a reasonable price, the Alpha 8 makes the adventure of diving that much easier to experience.

- The best price-to-performance ratio in its class
- Designed to perform to the U.S. Navy's Class A standard at 198 feet
- Unmatched reliability and easy maintenance

PX-3™ FIRST STAGE

- High performance flow-through balanced first stage provides extremely high and smooth air delivery even under the most extreme conditions
- Low pressure port swivel provides versatile positioning of hoses
- Nitrox compatible to 40%
- Equipped with DVT (Dry Valve Technology)



DVT

ALPHA® 8 SPORT

PROFESSIONAL PERFORMANCE – ENTRY LEVEL PRICE

If you believe that you shouldn't have to sacrifice performance for price, the Alpha 8 Sport is for you. The Alpha 8 Sport is the top-performing regulator in its class, and one of the most affordably priced regulators you can buy.

- The best price-to-performance ratio in its class
- Designed to perform to the U.S. Navy's Class A standard at 198 feet
- Unmatched reliability and easy maintenance

SP-5™ FIRST STAGE

- Flow-by piston first stage exceeds European CE performance standards and outperforms every competitive regulator in its class
- Nitrox compatible to 40%
- May be equipped with or without DVT (Dry Valve Technology)



DVT

SWIVEL OCTO™

EVERY WHICH WAY

Your octopus should be unobtrusive, but ready at a moment's notice in an emergency. In this respect, the Swivel Octo is the ultimate in function and reliability - everything an octopus should be.

- Side exhaust creates the ultimate octo design with no upside down
- In-line swivel allows left or right hand side mounting
- May be mounted over or under your shoulder
- Lies streamlined and flat, reducing drag and tangles on other equipment
- High visibility yellow hose



SLIMLINE™ 2 OCTO

KEEP A LOW PROFILE

A super streamlined alternate air source that lies flat to reduce drag and prevent tangles.

- Flat design reduces drag and bulk
- Tough housing and rubber front cover will provide years of trouble-free diving
- Large high visibility purge button is easily identified and accessed in an emergency
- High visibility yellow hose



ALPHA® 8 OCTO

THE ALPHA STANDARD

If you believe that you shouldn't have to sacrifice performance for price, the Alpha 8 Octo is for you.

- Same rugged design as its primary counterpart
- High visibility yellow hose
- Large high visibility purge button is easily identified and accessed in an emergency



AIR XS™ 2 OCTO INFLATOR

ONE IS BETTER THAN TWO

Combines your backup regulator and BC inflator into one low profile, streamlined package. The Air XS 2 may be assembled on any Oceanic BC in minutes and eliminates a bulky hose and octo from your system. When needed, the Air XS 2 allows the diver to breathe normally as from any octo as well as simultaneously inflate or deflate the BC.

- Compact, integrated design eliminates the bulk of a traditional octo and hose
- The Air XS 2 is always right where you need it
- Ergonomic design for ease of use
- Optional integrated pull-ball allows activation of the cable exhaust valve while using the Air XS 2





DIGITAL OPTIC SYSTEM

In-mask Digital Optic System provides a clear, highly magnified image of your dive data, which is viewable regardless of environmental conditions and may be seen clearly by the vast majority of people, regardless of vision.



MULTIPLE WIRELESS TRANSMITTER COMPATIBILITY

A wireless transmitter threaded into the first stage high-pressure port continuously sends cylinder pressure data to select Personal Dive Computer models. Frequencies are individually coded to allow multiple divers to swim side by side without interference with other units, as well as allow advanced divers to monitor up to 3 independent cylinders – which may contain dedicated gas mixtures containing from 21-100% Oxygen.



OCEANIC PERSONAL DIVE COMPUTER ALGORITHM

Decompression theory can be trusted only as far as it has been demonstrated by actual test dive data. In 1987 a unique series of experiments were conducted by Diving Science and Technology (DSAT). Commissioned by the Professional Association of Diving Instructors (PADI), these Doppler ultrasound monitored human experiments conducted by Dr. Michael Powell produced the most comprehensive data set that exists for recreational divers to this day. These data were used to validate the PADI Recreational Dive Planner and are the basis of the algorithm used in all Oceanic Personal Dive Computers (PDCs).

Our trademark tissue loading bar graphs provide complete control of your margin of safety for each dive. Want to be a bit more cautious? Make it a personal rule to never enter into the caution zone; or stay one or more pixels away. Now you can even program several of our PDCs to do it for you with our patent pending Nitrogen Bar Graph Alarm; set it once and be alerted when your bar graph reaches that level.



PATENTED AIR TIME REMAINING ALGORITHM

You're at 80 feet with 1300 psi remaining in your cylinder – how long before you need to begin an ascent to a shallower depth? Our patented Air Time Remaining feature calculates your current depth, breathing rate, cylinder pressure, ascent time, and decompression status to tell you exactly how much time you can remain underwater – all in real time to give you the precise information that you need.



BUDDY PRESSURE CHECK™

Buddy Pressure Check allows you to keep tabs on the tank pressure of up to two other divers – swim to within 4-6 feet of your buddy and press a button to see his or her tank pressure – how easy could it be? Say goodbye to vague hand signals and disruptions.

PERSONAL DIVE COMPUTERS

Oceanic Personal Dive Computers have always been the cornerstone of our innovative product line. Oceanic pioneered many features and design elements now considered industry standards with advances in digital design and technology. Each Oceanic Personal Dive Computer is conceived, designed, manufactured, and tested in our own state-of-the-art facility. Innovative design, advanced technology and superior workmanship come together to create the finest digital instrumentation in diving today.

DATAMASK™ HUD

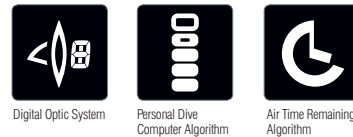
THIS REALLY DOES CHANGE THINGS

Every once in a while a revolutionary product comes along that changes everything. The DataMask is not just about having a computer in your mask – it is about the many practical benefits provided by truly “Hands-Free Diving.”

The DATAMASK contains a miniature liquid crystal display (LCD) panel, proprietary Digital Optic System, microprocessor, depth transducer, wireless cylinder pressure receiver, diver replaceable battery, and controlling software. The miniature LCD allows you to keep your eyes focused on the dive while presenting critical dive data including: current depth, elapsed dive time, cylinder pressure, and dive time remaining. The Digital Optic System provides a clear, highly magnified image of the LCD, which is viewable regardless of environmental conditions and may be seen clearly by the vast majority of people, regardless of vision.

- In-mask Digital Optic System provides a clear, highly magnified image of the LCD, which is viewable regardless of environmental conditions and may be seen clearly by the vast majority of people, regardless of vision
- Allows “Hands-Free Diving” for greater convenience, enjoyment and safety during the dive
- Wireless Air Integrated Technology with patented Air Time Remaining Algorithm
- Air, Nitrox, Gauge and Free Dive Operating Modes
- Audible Alarms with User Acknowledgment
- Adjustable backlight intensity may be set on the surface or underwater, allowing the user to fine-tune display so that it’s easily readable, yet not distracting
- Advanced User Settings & Options
- Diver Replaceable Batteries

Includes: Transmitter, Batteries, Protective Case, USB PC Interface Cable and Software, Operating Manual, QuickStart Guide (on CD), Laminated Review Card, McNett® MicroNet™ Towel, Sea Buff™ Pre-Cleaner and Sea Gold™ Anti-fog



Co-founded and operated by Mike Hollis, Oceanic’s instrumentation division is a leading supplier of mechanical and digital pressure sensing instruments to the recreational scuba, life-support, military, and industrial safety industries. Under the direction of Mike, Oceanic’s research and development team made the impossible a reality with the development and production of the DATAMASK HUD.



VT3™

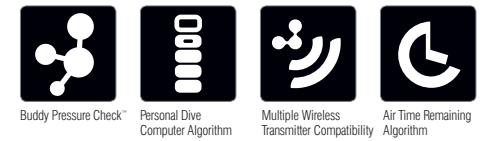
NO STRINGS ATTACHED

The VT3 is a next generation dive computer featuring superior design and technology combined with Oceanic’s trademark ease of use and customization. With Oceanic’s wireless transmitters, the diver can monitor gas pressure from up to three independent cylinders – ideal for both technical diving applications and recreational diving with Buddy Pressure Check™.

- Air, Nitrox, Gauge and Free Dive Modes
- Wireless Air Integrated Technology
- Switch between up to 3 independent transmitters, tracking 3 Nitrox mixes to 100% O2 or your buddy’s tank pressure
- SmartGlo® Backlighting
- Adjustable safety stop time and depth
- OceanLog® PC Download and Settings Upload Software and USB V2 Cable included (complete unit with Wireless Transmitter only)
- Diver-Replaceable Batteries™



Wireless Transmitter



ATOM® 2.0

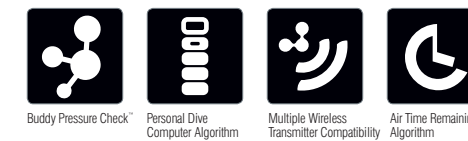
WITHSTANDS HIGH PRESSURE MAKING IT PERFECT FOR THE OFFICE

The ATOM 2.0 is equally at home when worn with wetsuit or a three-piece suit. Don't be deceived by its small size -- this PDC powerhouse delivers all the bells and whistles you can imagine at the touch of a button.

- Air, Nitrox, Gauge and Free Dive Modes
- Switch between up to 3 independent wireless transmitters, tracking up to 3 Nitrox mixes to 100% O2
- Buddy Pressure Check™
- Mineral glass lens
- Advanced watch functions including alternate time zone, stopwatch, lap timer, daily alarm, and countdown timer
- Audible Alarms with Alarm Acknowledgment™
- Alpha-numeric display
- Adjustable safety stop time and depth
- Dedicated Free Dive Mode calculates and tracks Nitrogen Tissue Loading – allowing users to alternate between SCUBA and Free Diving
- OceanLog® PC Download and Settings Upload Software and USB V2 Cable included (complete unit with Wireless Transmitter only)
- Diver-Replaceable Batteries™



Wireless Transmitters. The Atom 2.0 and VT 3 can receive cylinder pressure from up to 3 transmitters, perfect for tech divers or Buddy Check!



PRO PLUS™ 2

SUPER-SIZE ME

This popular PDC features the largest display available and our patented Air Time Remaining calculations built right in. No other air-integrated PDC can match its durability, readability and ease of use.

- Your choice of up to 4 dive mode displays may be changed at any time during the dive
- Patented Air Time Remaining algorithm provides extremely accurate time based on current depth and your personal air consumption
- “Turn-Around” pressure prompt
- “Ending” pressure alarm ensures that you return to your exit point with a predetermined reserve
- Safety stop prompt
- Diver-Replaceable Battery™



Personal Dive
Computer Algorithm



Air Time Remaining
Algorithm

VEO® 250

TECHNICALLY SUPERIOR – INTUITIVELY SIMPLE

The VEO 250 boasts the latest features in an extraordinarily user-friendly two-button PDC, offering precisely what you need for any adventure.

- Air, Nitrox and Gauge Modes
- Advanced user settings and options
- Your choice of up to 4 dive mode displays may be changed at any time during the dive
- Audible alarm with flashing LED warning light and Alarm Acknowledgement™
- SmartGlo® Backlighting
- Optional OceanLog® PC Download and Settings Upload Software and USB Cable
- Diver-Replaceable Battery™
- Available as modules, wrist mounts, and 2 or 3 gauge consoles.



Personal Dive
Computer Algorithm

GEO™

SPORTY-LICIOUS

The GEO is a powerful and versatile new sports watch, cementing our reputation as the leader in specialty dive watches. A unique combination of quality, function and style, the GEO is perfect on its own or as a backup to any of our other PDC models.

- Air, Nitrox, Gauge and Free Dive Modes
- Audible Alarms with Alarm Acknowledgement™
- Adjustable safety stop time and depth
- OceanGlo® Backlighting
- Optional OceanLog® PC Download and Settings Upload Software and USB V2 Cable
- Diver-Replaceable Battery™



Personal Dive
Computer Algorithm

VEO® 100 NX

AIR TODAY – NITROX TOMORROW

The Oceanic VEO 100 Nx coordinates carefully arranged information with our trademark ease-of-use, oversized digits, bar graphs, and intuitive icons. Loaded with features but still very user friendly with a single operating button.

- Air and Nitrox Operating Modes
- Easy to learn and use
- “Hockey Puck” module is the same size as most depth gauges for easy and inexpensive console upgrades
- Water or manual activation
- Customize the information displayed during a dive with a press of a button
- Safety stop prompt
- 12 dive log book
- Diver-Replaceable Battery™
- Available as modules, wrist mounts, and 2 or 3 gauge consoles.



Personal Dive
Computer Algorithm

ACCESSORIES

OCEANLOG™ 2.X

PC INTERFACE SOFTWARE FOR RECORDING, ORGANIZING AND ANALYZING YOUR DIVE DATA.

OceanLog allows you to easily transfer dive data from your PDC to your PC via a plug-in USB cable. In addition to detailed dive analysis, OceanLog PC Interface also allows you to quickly and easily set all of your Personal Dive Computer settings and options directly through your PC.

- Oceanic's OceanLog 2.X PC Interface is an exquisitely detailed digital dive log. OceanLog allows you to easily transfer dive data from your Oceanic Personal Dive Computer to your PC via USB cable.
- Following download, your dive data is automatically formatted for easy viewing, sorting, analysis, and printing.
- Enter location, dive buddy, notes and as much or as little detail as you wish to create your own digital logbook.
- In addition to detailed dive analysis, OceanLog 2.X PC Interface also allows you to quickly and easily set most of your Personal Dive Computer settings and options directly through your PC.
- OCEANLOG 2.X is compatible with the DataMask, ATOM 2.0, VT3, Pro Plus 2, Geo, Veo 250, and Veo 180.



BATTERY KITS

Genuine Oceanic replacement parts ensure trouble-free operation and long life. Includes factory approved battery, battery hatch o-ring, silicone grease, and instructions.



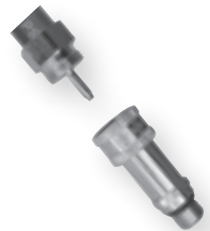
LENS PROTECTORS

Protect your investment with a lens protector designed specifically for your Instrument.



DATALINK™

Quickly disconnect the high pressure hose of any gauge console from the high pressure port of your regulator with no tools required. Nitrox compatible.



RETRACTORS

Mount your instrument console, light or other accessory to your Oceanic BC with our specially designed Retractor.



SWIV™ MAXDEPTH GAUGE

MODULAR FLEXIBILITY

The MaxDepth gauge is still one of the most dependable instruments around for divers who are just starting out or don't feel they need the advanced features of a Personal Dive Computer just yet.

- OceanGlo® luminescent gauge face absorbs light and glows approximately 7 times faster and longer than conventional glow-in-the-dark materials
- 200' maximum depth reading
- Automatic maximum depth indicator
- Available in wrist unit and 2 or 3 gauge consoles



OIL-FILLED™ GAUGE

RUGGED DURABILITY

The Oil Filled Depth Gauge is a great value.

- Rugged and economical design
- 150' maximum depth reading
- Large luminous display for easy reading



SWIV™ PRESSURE GAUGE

PRECISION ACCURACY

The SWIV Pressure Gauge is an accurate and reliable submersible pressure gauge rated to 5,000 psi.

- Nitrox compatible to 50% O2
- OceanGlo® luminescent gauge face
- Integrated temperature gauge

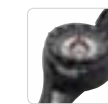


SWIV™ SIDESCAN COMPASS

FIND YOUR WAY

Large, easy-to-read bearing indicators on our extremely bright OceanGlo® luminescent floating card make quick work of navigation, especially in limited visibility.

- Proprietary design ensures quick response and smooth movement
- Top or side reading
- High visibility lubber line
- Large ratcheting bezel
- Direct and reciprocal index points
- Available in wrist, console, hosemount or clip mount



PONY BOTTLE GAUGE™

TRY THIS ON FOR SIZE

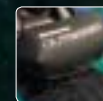
Ideal for back-up air supplies and the perfect accessory for use with wireless PDC's, allowing you to quickly pressure check your cylinder without linking your receiver unit.

- Threads directly into first stage high pressure port
- Nitrox compatible to 50% O2
- Readings to 5,000 psi



BUOYANCY COMPENSATORS

Each Oceanic BC is designed and manufactured with the most uncompromising processes and materials to withstand the rigors of day-to-day exposure to chlorine, sun and salt water. Oceanic's Research and Development team is always seeking innovations in materials, production processes, and features that will make buoyancy control more natural for every diver, setting us apart as a leading innovator in Buoyancy Compensator design and manufacturing.



PATENTED HIGH LIFT TRANSFER (HLT) SYSTEM

Oceanic's Patented flow-through High Lift Transfer (HLT) system transfers buoyant lift from the rear bladder to a 15-pound front bladder for effortless face-up surface flotation. Simply detach the clip and velco flap, water pressure does the rest. For additional buoyancy, you may then inflate to fill both bladders for a total of up to 60 pounds of lift! When you're ready to descend again, simply lean forward in the water to transfer the air to the rear bladder, and fold the HLT to stow.



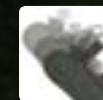
PATENTED QUICK LOCK RELEASE (QLR) WEIGHT INTEGRATION SYSTEM

Oceanic's patented QLR Quick Lock & Release System is standard equipment on most Oceanic BCs. Your weights stay in position throughout the dive and do not shift around affecting buoyancy or position in the water. The weight pouches are simple to load and easy to release. Best of all, our patented "positive-lock" system helps to ensure that they'll stay put.



BIOFLEX® SUPER-STRETCH AIR CELL

Your equipment should enhance, not hinder the joy and exhilaration of diving. Nowhere is this more important than with BC's, where comfort and freedom of movement must be balanced against function and durability. Responding to this challenge led Oceanic design engineers to create BioFlex - a unique "living fabric" that stretches, flexes and conforms to the body. BioFlex is an extraordinary fabric, which stretches, fully inflated up to 30% over conventional nylon or polyurethane BC materials. The idea being that if a material could stretch while remaining airtight, you could make smaller air cells, creating less bulk and drag underwater while achieving high volumes of lift when required. BioFlex eliminates chest squeeze, conforms to the diver's body and provides a slim, body hugging profile.



CUSTOM FIT HARNESS

Multi-position torso height adjustments allow you to customize the fit of the padded shoulder harness, delivering individual comfort to fit all shapes and sizes.



FADELESS 1000 DENIER CORDURA® CONSTRUCTION

Exterior abrasion points are covered in our new "Fadeless" 1000-denier Cordura®, a high-performance fabric resistant to abrasions, tears, and scuffs.

EXCURSION™

GEARED FOR ADVENTURE

You glide through the water like a manta ray, air bladder tucked neatly behind you. Up front, there's nothing but contoured harness straps and a couple of integrated weight pockets. You're uncluttered, unencumbered and looking good. Built tough for use in both recreational and technical diving, the Excursion is extremely comfortable and stable. Weighing in at less than 10 lbs, the Excursion is the ultimate dual-purpose BC for both the local and traveling diver.

- Patented BioFlex® rear inflation bladder provides 45 lbs. of lift and minimum drag when deflated
- Optional 58 lbs bladder
- Cordura® construction for unsurpassed durability and fade resistance
- Reinforced contoured shoulders and padded back pack with lumbar support
- Adjustable position sternum strap
- QLR® Integrated Weight System accommodates up to 20 lbs. plus dual 5 lbs. rear weight pouches for improved in-water positioning
- Rolled Neoprene Neck Collar for ultimate comfort
- Pre-bent welded stainless steel d-rings
- Integrated instrument retractor mount (*retractor not included*) and Spinner BC Knife mounting grommets on either the left or right
- Zippered drop-down accessory pocket



PROBE™ LX

TECH IN ALL THE RIGHT PLACES

For divers who prefer a traditional jacket style design but desire many of the rugged features of a tech oriented back mount BC, the Probe LX is the ultimate solution.

- Heavy-duty tech-oriented features in a jacket style
- High lift capacity and minimum drag when deflated with patented BioFlex® bladder
- Cordura® construction for unsurpassed durability and fade resistance
- QLR® Integrated Weight System accommodates up to 20 lbs. plus dual 5 lbs. rear weight pouches for improved in-water positioning
- Front operated rear pull dump
- Pre-bent welded stainless steel d-rings
- Integrated instrument retractor mount (*retractor not included*) and Spinner BC Knife mounting grommets
- 2 oversized zippered main pockets
- 2 zippered utility pockets easily accommodate a light, extra mask, pocket snorkel, reel, or signaling device



HERA™

JUST FOR THE LADIES

The HERA is designed specifically around the female form with ample adjustments to make it your own without sacrificing features and functionality. This may just be the most comfortable, best fitting BC you've ever worn.

- Hybrid bladder combines the benefits of both rear inflation and jacket style BCs
- Patented Custom Fit Harness™ with multi-position shoulder strap that delivers individual comfort for women of all sizes
- Contoured over the hip for added comfort
- QLR® Integrated Weight System accommodates up to 20 lbs. plus dual 5 lbs. rear weight pouches for improved in-water positioning
- Pre-bent welded stainless steel d-rings
- Cordura® construction for unsurpassed durability and fade resistance
- Weight pockets are positioned at a slight downward angle to aid self-loading
- Reinforced shoulders, padded back pack and an adjustable position sternum strap ensure comfort and stability
- Integrated instrument retractor mount (*retractor not included*) and Spinner BC Knife mounting grommets

Patented (DUI) Torso Height Adjustment
U.S. Patent No. 6,120,213



OUTRIGGER® HLT

THE BEST OF BOTH WORLDS

Experienced divers agree that a rear inflation design is best for streamlined freedom of movement and positioning underwater, while a jacket style provides more superior surface flotation - now you can have your cake and eat it too. The Outrigger is a revolutionary low-profile, rear inflation BC with a patented flow-through High Lift Transfer (HLT) system designed to transfer buoyant lift from the rear bladder to a 15-pound front bladder for effortless face-up surface flotation.

- Patented flow-through High Lift Transfer (HLT) system transfers buoyant lift from the rear bladder to a 15-pound front bladder for effortless face-up surface flotation. The HLT System is easily stowed after use; simply lean forward so that water pressure moves air back into the rear bladder, and stow the HLT System.
- Cordura® construction for unsurpassed durability and fade resistance
- Reinforced shoulders, padded back pack with lumbar support and an adjustable position sternum strap ensure comfort and stability
- QLR® Integrated Weight System accommodates up to 20 lbs. plus dual 5 lbs. cylinder band weight pouches for improved in-water positioning
- Integrated instrument retractor mount (*retractor not included*) and Spinner BC Knife mounting grommets on either the left or right



ISLANDER™

THE NEW LIGHTWEIGHT CHAMPION

This is the ultimate warm water BCD with the perfect balance of features to make diving a pure joy. If your diving experience calls for a clean, straightforward design that focuses on comfort, and your travel plans call for lightweight luggage, then the Islander BC was designed for you.

- Low profile rear inflation bladder for minimum drag
- Cordura® construction for unsurpassed durability and fade resistance
- Includes 2 carabineer clips with 16 attachment points for easy, one-handed accessory attachment.
- Integrated Weight System accommodates up to 14 lbs. plus dual 5 lbs. cylinder band weight pouches for improved in-water positioning
- Integrated instrument retractor mount (*retractor not included*) and Spinner BC Knife mounting grommets on either the left or right



OCEANPRO®

RUGGED AFFORDABILITY

An economical jacket for the diver who wants to keep it simple, OceanPro BC features the same quality workmanship, comfort and fit that you expect from Oceanic.

- QLR® Integrated Weight System accommodates up to 20 lbs.
- Integrated backpack with carrying handle
- Optional dual 5 lbs. cylinder band weight pouches for improved in-water positioning
- Tank positioning strap
- Lower pull dump
- Easy to adjust quick release shoulder adjustments
- Strategically placed plastic d-ring attachment points
- Sternum strap



UTILITY POCKET

- May be mounted on any Oceanic BC with Accessory Mounting Grommets
- Zipper closure and drain



BC ACCESSORY KIT

Our BC Accessory Pack includes Spinner BC Knife, Hybeam Halogen Hand Light, a retractor, and convenient carry bag.





MASKS, SNORKELS, FINS

Choosing the right mask can be a real eye opener. Whether scuba diving, free diving or snorkeling, so much of your underwater experience depends on the performance of this seemingly simple piece of gear. All masks are not created equal. Finding the right combination of materials, features and most importantly, fit, is crucial to your enjoyment. Oceanic has one of the most complete and varied lines of professional diving masks available.

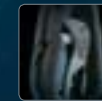
The first snorkels were probably devised in ancient times out of the hollow reeds that are common to many lakes and marsh areas. Today, Oceanic ingenuity has refined snorkels to include innovative features including our patented Dry Snorkel Technology, quick disconnect mask strap attachments, oversized purge valves for easy clearing, comfortable 100% liquid silicone mouthpieces, and advanced materials designed to provide years of dependable use.

Divers use fins in many different ways. However, it's when you find yourself attempting to make headway into a current that you really find out if your fins can deliver what they promised. It's when you have your head down and you're breathing hard that you discover whether you made the best purchasing decision. Designed for top performance and extraordinary comfort, Oceanic Fins combine ergonomics, hydrodynamics and state-of-the-art materials technology to produce a truly exceptional product.



ADVANCED COMPOSITE MATERIALS

Control the shape of the blade during the kick cycle and you control water movement – thus maximizing the efficiency and propulsion of the fin. Our QuadFlex construction features two composite and two natural rubber compounds working together to provide varying levels of rigidity to precisely control the shape of the blade as it travels through the water. The engineered semi-rigid battens, flex channels and side rails direct water flow off the tips of the fin without allowing water to “spill” from the sides of the blade for uncompromising power and efficiency.



DRY SNORKEL TECHNOLOGY

The name says it all. Designed to be exactly what its name suggests, the UltraDry Snorkel incorporates Oceanic's patented Dry Snorkel Technology into an ultra-low profile product that is ergonomically designed for comfort and function. This technology creates a seal to virtually eliminate water entering the snorkel barrel, while achieving superior air flow performance on the surface. When the snorkel top is above water, the valve keeps the airway open for smooth, normal breathing. When the snorkel is submerged, the valve automatically closes, sealing the airway and effectively preventing water from entering.



SEAMLESS PANORAMIC LENS

Our Seamless Panoramic Lens provides distortion-free uninterrupted panoramic view to dramatically increase your field of view.

ION™ 3

WIDE ANGLE VIEW

No lens frame to obscure your peripheral view in a panoramic three-window mask featuring our Seamless Panoramic Lens technology.

- Specially designed to fit narrower faces
- Low Volume design, with unobstructed panoramic view
- 100% liquid silicone skirt
- Easy-adjust swiveling buckles
- Extremely lightweight and low profile
- Tempered glass lenses
- Neoprene Comfort Strap



Seamless Panoramic Lens

NEO™ 2

ULTIMATE FIELD OF VIEW

The Neo 2 features an unsurpassed field of vision in a stylish 2-window design. Build to fit a wide variety of faces; the Neo 2's skirt is made from the finest grade of 100% liquid silicone available.

- Highest grade 100% liquid silicone skirt available for an exceptional fit and long life
- Sturdy lightweight frame
- Low volume design for wide field-of-view and easy clearing
- Tempered glass lens for safety
- Easy adjusting buckles for convenience
- Neoprene Comfort Strap



ION™ SERIES

CHANGE YOUR POINT OF VIEW

A low profile family of masks for the pro, the semi-pro, and all lovers of the sport who want to see the underwater world more clearly.



OPTICAL LENSES

Correct your vision underwater without the discomfort and risk of contact lenses. May be easily installed without tools in any of the Ion masks.



ION™

May be easily fitted with optical lenses from -1.5 to -8.0 diopters in .5 increments

- Sturdy lightweight frame
- Low volume design for wide field-of-view and easy clearing
- 100% liquid silicone for comfort and long-life
- Tempered glass lens for safety
- Easy adjusting buckles for convenience
- Comfort Strap included



ION™ 2

May be easily fitted with optical lenses from -1.5 to -8.0 diopters in .5 increments

- Same design features as the Ion with a high volume purge valve
- 100% liquid silicone for comfort and long-life
- Tempered glass lens for safety
- Low volume design for wide field-of-view and easy clearing
- Easy adjusting buckles for convenience
- Comfort Strap included



ION™ 4

May be easily fitted with optical lenses from -1.5 to -8.0 diopters in .5 increments

- Same great fit and style as the Ion with side windows for increased peripheral vision
- Sturdy lightweight frame
- Low volume design for wide field-of-view and easy clearing
- Tempered glass lens for safety
- 100% liquid silicone for comfort and long-life
- Easy adjusting buckles for convenience
- Comfort Strap included



MAKO™

STYLISH LOW VOLUME DESIGN

The Mako is a stylish low-volume design that concentrates on achieving a balance of features and abilities. Easy to clear and comfortable to wear, feels so natural you might be checking yourself for gills at the end of your dive.

- Highest grade 100% liquid silicone skirt available for an exceptional fit and long life
- Sturdy lightweight frame
- Low volume design for wide field-of-view and easy clearing
- Tempered glass lens for safety
- Easy adjusting buckles for convenience
- Neoprene Comfort Strap



SHADOW™ / MINI SHADOW™

MASK WEAR THAT KEEPS YOU FOCUSED

100% liquid silicone skirt attached directly to the tempered glass lens. No mask frame means the Shadow Series offers an incredible field of vision and packs flat.

- No-frame design reduces weight and provides one of the largest fields-of-view
- Extremely low volume design
- Swiveling, easy adjusting buckles
- Ideal for hunters and photographers
- Perfect back-up mask as it folds and fits easily in your BC pocket
- Comfort Strap included
- Mini Shadow™ is designed to fit a wide variety of smaller faces



COMFORT STRAP™

- Easy to adjust straps
- Compatible with most masks
- Flexible neoprene construction
- Prevents uncomfortable hair entanglement

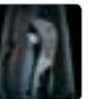


ULTRA DRY™

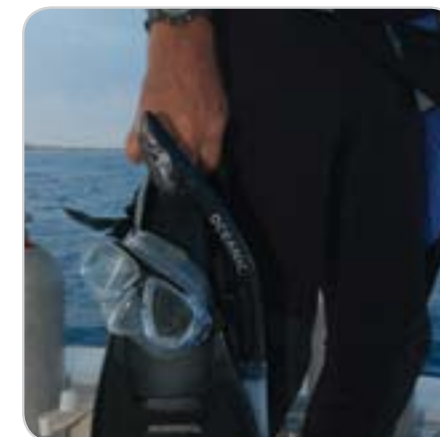
THE NAME SAYS IT ALL

Designed to be exactly what its name suggests, the Ultra Dry Snorkel incorporates Oceanic's patented Dry Snorkel Technology into an ultra-low profile product that is ergonomically designed for comfort and function. This technology creates a seal to eliminate water entering the snorkel barrel when submerged, while achieving superior airflow and breathability on the surface.

- Patented Dry Snorkel Technology virtually eliminates water entry without sacrificing performance
- Oversized purge valve for easy clearing
- Quick-release swiveling snorkel keeper
- Drop away smooth bore flex mouthpiece
- Replaceable 100% liquid silicone mouthpiece and purge valve



UltraDry Dry Technology

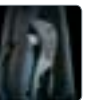
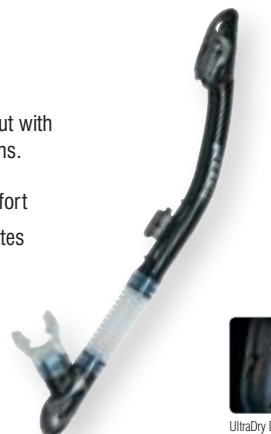


ULTRA DRY MINI™

DITTO

Featuring the same fine qualities as the Ultra Dry, but with a mouthpiece designed for smaller adults and youths.

- Smaller 100% liquid silicone mouthpiece for comfort
- Patented Dry Snorkel Technology virtually eliminates water entry without sacrificing performance
- Oversized purge valve for easy clearing
- Quick-release swiveling snorkel keeper
- Drop away smooth bore flex mouthpiece



UltraDry Dry Technology

POCKET SNORKEL™

A GOOD DIVER IS ALWAYS PREPARED

For divers that dislike wearing a snorkel, but know that they should always be prepared, Oceanic provides an innovative solution. The Pocket Snorkel folds neatly and out of the way in your BC pocket when not in use.

- Easily removed and folded for storage in BC pocket
- Dry top deflector prevents water entry
- Drop away flex mouthpiece
- Oversized purge valve for easy clearing
- Patented Snorkel Lock™ allows easy removal and attachment
- Replaceable 100% liquid silicone mouthpiece



ARID™

EXTRA DRY

A patent pending deflector helps to keep the Arid as dry as a desert, even in waves and wind.

- Dry top deflector
- Drop away flex mouthpiece
- Quick-release swiveling snorkel keeper
- Oversized purge valve for easy clearing
- Replaceable 100% liquid silicone mouthpiece



RESPONSE™

A BREATH OF FRESH AIR

The Response Snorkel has an oversized exhaust valve and a self-venting purge valve, which lets you clear the snorkel with just a puff of air.

- Efficient exhaust valve for easy clearing
- Quick-release swiveling snorkel keeper
- Drop away flex mouthpiece
- Replaceable 100% liquid silicone mouthpiece



BLAST™

OLD SCHOOL

A simple, no-nonsense snorkel reminiscent of days gone by.

- Hypoallergenic high quality silicone mouthpiece
- Sliding snorkel keeper



VORTEX® V-16

ARE THOSE ROCKETS ON YOUR FEET?

Speed, comfort, and maneuverability; you can have it all with the V-16. The V-16 combines the patented design concepts divers have come to expect from Oceanic with a new mix of materials that enhance performance and style. Compared to conventional fins, the V-16 is up to 30% faster and more efficient, with less effort, stress and strain resulting in greater comfort and control.

- Patented Nature's Wing® Propeller Fin Technology
- Semi-rigid battens and rubber flex channels within the blade precisely control the shape of the blade during the fin stroke to optimize power and reduce drag
- Oversized side rails add rigidity to the oversized blades for increased power and efficiency
- Ergonomically designed foot pocket accommodates virtually all foot sizes and boot styles
- Angled blade for preferred angle of attack
- Easy on/off fin strap with thumb loop
- Easy adjust quick-release buckles



VORTEX® V-12

EFFICIENT POWER

The V-12 Fin is an engineering revolution – designed from the ground up to deliver what others only promise – enhanced speed and efficiency with virtually no effort for the diver, regardless of size, strength or kicking style. Independent testing has shown that greater efficiency, resulting in reduced air consumption is achieved when using the V-12 than any other fin on the market.

- Patented Nature's Wing® Propeller Fin Technology
- Duroprene™ and natural rubber materials for ideal flex and memory
- Oversized side rails add rigidity to the oversized blades for increased power and efficiency
- Ergonomically designed foot pocket accommodates virtually all foot sizes and boot styles
- Angled blade for preferred angle of attack
- Easy on/off fin strap with thumb loop
- Easy adjust quick-release buckles



VORTEX® V-8

KICK IT IN TO HIGH GEAR

The V-8's high performance and superior maneuverability is achieved by combining patented Nature's Wing® Propeller Fin Technology with state-of-the-art materials. The V-8 is designed to provide greater thrust while reducing muscle fatigue. The dual blade design allows the diver to make a much more efficient flutter kick, thus reducing the amount of effort needed to propel the diver through the water.

- Patented Nature's Wing® Propeller Fin Technology
- Advanced composite materials for ideal flex and memory
- Rigid side rails for increased power and efficiency
- Ergonomically designed foot pocket accommodates virtually all foot sizes and boot styles
- Angled blade for preferred angle of attack
- Easy adjust quick-release buckles



VIPER™

SO FAST AND RESPONSIVE IT'S SCARY

The Viper is a precision blend of ergonomics, hydrodynamics and materials technology created for ultimate comfort, efficiency and performance. The Viper blade's flexible Power Thrust Channel™ directs water off the tip of the blade for improved power and efficiency by utilizing the entire surface area of the blade. The engineered channels and side rails direct water flow off the tips of the fin without allowing water to "spill" from the sides of the blade for uncompromising power and efficiency.

- Flexible Power Thrust Channel™ directs water off the tip of the blade for improved power and efficiency
- Power Vents™ reduce stress while accelerating water over the blade
- Oversized blade produces increased thrust and propulsion
- Generous yet streamlined foot pocket fits a wide range of boot styles while significantly reducing drag
- Extremely lightweight for increased performance and ease of travel
- Easy adjust quick-release buckles



VORTEX® V-6

VROOOM!

The Vortex V-6 is perfect for the warm-water diver, snorkeler, or free-diver that wants maximum power generation, response, and acceleration out of every single turn. The V-6 is extremely lightweight, yet delivers greater speed and efficiency than most open heel fins.

- Patented Nature's Wing® Propeller Fin Technology
- Small size and light weight is ideal for travel
- Evaprene composite material for increased performance and long life
- Comfortable rubber foot pocket in a wide range of sizes



CARIBE X™

PACK, FLY AND DIVE

Shift into high gear when you hit the water with these smooth, powerful warm water fins.

- Award-winning performance
- Flexible center channel improves efficiency and eliminates lateral blade movement
- Ultra lightweight design is ideal for the traveling diver or snorkeler
- Oversized blade provides power with minimal effort
- Soft full foot pocket in a wide range of sizes



FLEX™

FLIPPER WILL BE JEALOUS

The Flex is an exceptionally lightweight fin that delivers consistent performance and response in the water. The Flex full foot fin is an ideal snorkeling fin for all levels of expertise.

- Lightweight design is easy to pack
- Durable nylon blade
- Comfortable foot pocket in a variety of adult and youth sizes



WETSUITS & NEOPRENE ACCESSORIES

Comfort and warmth are absolute essentials to an enjoyable dive experience. From the very start, divers are taught to plan their dives and dive their plans. Part of that planning is having the right wetsuit for the situation. Whether you're snorkeling in 84-degree surface waters or diving the cold dark waters of an offshore wreck, Oceanic has a suit designed to keep you warm and comfortable.



OCEANSPAN

Strategically placed OceanSpan Super-Stretch Neoprene offers completely unrestricted range of movement for ultimate comfort and eases donning and doffing. OceanSpan Super-Stretch Neoprene panels are utilized in the shoulder and lumbar area of the male suits and hips and bust in the female suits while high-density neoprene is applied in the torso, legs and arms for uncompromising compression resistance for warmth and long use life.

ULTRA™ 7MM

SUPERIOR WARMTH AND COMFORT

Provides superior warmth, protection and freedom of movement in a stylish and ultimately comfortable back-zip design. Strategically placed OceanSpan Super-Stretch Neoprene offers completely unrestricted range of movement and eases donning and doffing.

- 6-Point Skin-in Neoprene Seals (wrists, ankles, zipper, and neck) to reduce water flushing
- OceanSpan Super-Stretch Neoprene panels in shoulders and lumbar area (male) and hips and bust (female) for ultimate comfort and ease of donning
- High-density neoprene in torso, legs and arms for uncompromising compression resistance for warmth and long use life
- Adjustable collar for reduced water entry and comfort
- Heavy-duty knee and shin pads for abrasion resistance

Available January 2008



ULTRA™ .5MM

SECOND SKIN

For water so warm and mild you're tempted to dive au naturel, but you still want full protection from the sun and from any scrapes with coral, sand or dive gear. The Ultra .5 jumpsuit allows you total freedom, flexibility, comfort, and protection.

- Stirrups and thumb loops make donning a snap when layering under a thicker suit
- Adjustable skin-in lined collar for reduced water entry and comfort

Available January 2008



ULTRA™ 3/2MM

ULTIMATE VERSATILITY

For ultimate versatility in warmer climates you need a suit for a wide range of temperatures from warm surface waters to chilly thermoclines on deeper dives. Designed for maximum flexibility, warmth and comfort so you can forget about your gear and focus on your dive. The 3mm chest panels keep your core warm, while the 2mm extremities and strategic placement of our OceanSpan Super-Stretch Neoprene offers completely unrestricted range of movement.

- 5-Point Skin-in Neoprene Seals (wrists, ankles and neck) to reduce water flushing
- OceanSpan Super-Stretch Neoprene panels in shoulders and lumbar area (male) and hips and bust (female) for ultimate comfort and ease of donning
- High-density neoprene in torso, legs and arms for uncompromising compression resistance for warmth and long use life
- Adjustable collar for reduced water entry and comfort

Available January 2008



ULTRA™ 2MM SHORTY

COMFORT, DURABILITY AND NO-NONSENSE FUNCTION AT AN INCREDIBLE VALUE

By freeing the leg below the knee, Ultra Shorties are also ideal for many other watersports activities besides diving.

- 5-Point Skin-in Neoprene Seals (arms, legs and neck) to reduce water flushing
- OceanSpan Super-Stretch Neoprene panels in shoulders and lumbar area (male) and hips and bust (female) for ultimate comfort and ease of donning
- High-density neoprene in torso, legs and arms for uncompromising compression resistance for warmth and long use life
- Adjustable collar for reduced water entry and comfort

Available January 2008



OCEANSPAN™ HOOD

- 6mm OceanSpan Super-Stretch Neoprene for ultimate comfort and ease of donning
- 4mm skin-in face seal
- One-way vents eliminate trapped air



NEO-CLASSIC™

ON THE ROCKS

The Neo-Classic boot features a heavy-duty molded sole designed to withstand the rigors of diving on rocky coastlines and provide unparalleled stability on sandy beaches and boat decks as well.

- Virtually impenetrable molded sole with non-slip tread and superior arch support
- Reinforced pull tab eliminates stress on neoprene when donning
- 5mm double-glued and blind stitched neoprene construction for longevity and reduced water flow
- Hook and loop zipper flap ensures that the zipper will stay closed securely during the dive



VENTURE™

A PERFECT CHOICE FOR ANY DIVER

These boots are designed to work equally well on boat decks or slippery rocks, and the 5mm neoprene will keep your feet cozy-warm throughout a day of diving.

- Molded sole with non-slip tread
- 5mm double-glued and blind stitched neoprene construction for longevity and reduced water flow
- Corrosion-proof zipper
- Hook and loop zipper flap ensures that the zipper will stay closed securely during the dive



SUNSET™

WATER FUN. BOAT FUN. WALKING ON THE BEACH FUN

Lightweight 3mm neoprene makes this boot perfect for the traveling, warm water diver.

- Molded sole with non-slip tread
- 3mm double-glued and blind stitched neoprene construction
- Low cut slip on



REEF PRO™

GET IN TOUCH WITH THE TROPICS

This premier warm water glove combines a neoprene upper with a synthetic suede-like grip to provide some warmth, protection and incredible dexterity.

- Hook and loop cinch strap
- Amara® palm provides a high degree of protection, wear resistance and dexterity
- Perforated neoprene upper for increased flexibility and water flow



OCEANPRO® GLOVES

OFTEN IMITATED, NEVER DUPLICATED

Oceanic designed these gloves for divers tired of bulky gloves that were useless for gripping and manipulating buckles and clips. There are a lot of imitators but the materials and quality of the OceanPro always stand out.



OCEANPRO® 5.0

- 5mm double-glued and blind stitched construction for longevity and reduced water flow
- Anatomical cut for improved comfort and dexterity
- Screened non-skid grip
- Wide elastic hook and loop closure effectively seals out cold water for warmth

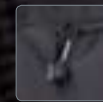
OCEANPRO® 3.0

- 3mm double-glued and blind stitched construction for longevity and reduced water flow
- Anatomical cut for improved comfort and dexterity
- Screened non-skid grip
- Wide elastic hook and loop closure effectively seals out cold water for warmth



GEAR BAGS

If you're looking for top quality Gear Bags designed by divers and featuring superior construction and innovative materials, look no further than Oceanic. Oceanic has a full range of Gear Bags of every type at a wide range of prices as ready for the adventure as you are. So why not travel in style with Oceanic.



SELF-HEALING ZIPPERS

Self-healing zippers for unmatched strength and durability.



TRAVELING LIGHT

In response to tightening airline restrictions, Oceanic developed the ultimate carry-on bag and travel scuba system to go with it. Including the Islander BC with Air XS 2 Octo, Delta 4 Regulator, ATOM 2.0 Wristwatch, Ultra .5 Wetsuit, and Vortex V-6 Fins, the system weighs in at just over 20 lbs., including the bag! Sling it over your shoulder or pull it behind you on your way to paradise.

PREMIER™ 2

EASY TRANSPORT FOR ALL YOUR GOODS

The Premier 2 features everything you need for trips of any length: durable all-terrain wheels, retractable handle, removable Reg Bag, full padding, and secondary external access compartments for quick storage when you're short on time.

- All-terrain wheels are ultra-durable and make short, smooth work of stairs, curbs, and other obstacles
- Ballistic nylon construction with reinforced wear areas
- 2-Position Telescoping Handle zips away when not in use
- Large self-healing YKK zippers with pull tabs
- Internal compartments protect and organize smaller items
- Includes Reg Bag
- Dimensions: 26" x 22" x 13"



Self-Healing Zipper

VOYAGER™ 3

DUFFEL ON WHEELS

Take the massive carrying ability of a duffel bag, add easy-access fin compartments, wheels, and a telescoping handle, and you've got the Voyager 3.

- Large wheeled duffel style bag with 2 position retractable handle
- Ballistic nylon construction with reinforced wear areas
- Self-healing YKK zippers with pull tabs
- Large zippered compartment with oversized fin pockets
- Spacious built-in dry compartment
- Dimensions: 30" x 15" x 15"



Self-Healing Zipper

AT-PAK™ 4

THE ULTIMATE WHEELED CARRY-ON

Designed to comply with most airline carry-on limitations, the AT-Pak 4 features convenient fin cinch-down straps and multiple internal compartments that allow you to stow a complete set of warm water gear. External organizer pockets give you easy access to travel documents and other goods that you need to have on hand.

- Carry-on a full set of warm water gear
- All-terrain wheels are ultra-durable and make easy work of stairs, curbs and other obstacles
- External fin cinch-down straps accommodate full-foot or adjustable fins
- Hide-away backpack straps
- 2-Position telescoping handle zips away when not in use
- Rubberized carrying handle
- Luggage tag
- External organizer pocket ideal for travel documents
- Dimensions: 20" x 18" x 10"



Traveling Light

Self-Healing Zipper

CARIBE™ MESH BACKPACK

EASY GEAR TRANSPORT FOR LOCAL AND TROPICAL TRIPS

Use these durable waterproof mesh bags for easy transport to the dive site or boat and storage between dive days. Ready to rinse your gear after a day of diving? Simply drop the entire bag in the rinse tank and hang it up to dry.

- PVC coated mesh construction is lightweight, and allows easy gear rinsing and drying
- Internal semi-dry pocket
- Backpack features padded shoulder straps and drawstring closure
- Dimensions: 26" x 7" x 11"



CARIBE™ MESH DUFFEL

- PVC coated mesh construction is lightweight, and allows easy gear rinsing and drying
- Corrosion-proof zipper closure
- Internal semi-dry pocket
- Dimensions: 26" x 13" x 13"



REG BAG™

PADDED PROTECTION

The lightest, most efficient way to keep your breathing system safe.

- Includes padded instrument sleeve
- Dimensions: 12" x 12" x 4"



DELUXE REG BAG

FUNCTIONAL NECESSITY

The perfect bag to transport and store your most valuable piece of equipment. The unique round shape allows the regulator to be stored in a gently rolled position, the best way to store a diving regulator to prevent stress on the hoses.

- Includes removable shoulder strap and luggage tag
- Exterior pocket
- Dimensions: 5" x 11"



Self-Healing Zipper

SPINNER™ BC KNIFE

SIMPLY STREAMLINED

Designed to mount on an Oceanic BC, the Spinner BC Knife is a compact solution perfectly suited to the streamlined diver. Comes with BC mounting kit.

- Solid 304 stainless steel blades feature razor-sharp smooth and serrated cutting surfaces
- Line cutter and metal butt for signaling
- Available in a sharp or blunt tip
- Compact quick-release sheath features a one-hand release



OP3x3 LIGHT

- 6061 T6 Aluminum with hard anodized coating
- Tempered glass lens with Fresnel dome to allow more unfiltered light
- Double sealed mechanical switch with Security Lock Pin
- Tri-lens reflector with a 6 degree beam angle
- 8 hour burn time on 3 C cell batteries
- 10,000 hour lifespan LED bulbs
- Max Operating Depth: 650ft / 200 meters
- Double O-Ring Seals



MAKO™ DPV

GO ALONG FOR THE RIDE

The Mako is a high performance personal diver propulsion vehicle utilizing the latest in motor and battery technologies to deliver startling speed and run time statistics, extending dive time and range. It's a whole lot of fun as well.

- Up to 2-hour run time
- Variable pitch propeller, which can easily be set to any one of nine pitch positions, resulting in a choice of improved thrust and speed or extended runtime
- Control the Mako's direction with just a gentle movement of the arms
- Green, yellow and red LED battery indicator
- Rechargeable battery with quick charge option between dives or a longer, deeper charge can be gained overnight
- Includes battery and charger
- Optional Cruise Seat tow bar



P.S.D.™

There's no doubt that safety should be a top priority for anyone hitting the water. Oceanic's innovative P.S.D. (Personal Signaling Device) is not only a highly visible signal tube, its patented zipper attachment allows you to quickly secure the tube over your head for hand's free, face-up positive buoyancy.



REEFSPORT™ VEST

The ReefSport Snorkeling Vest redefines comfort by using our soft, supple BioFlex®. Impervious to UV, saltwater and chlorine damage, the ReefSport™ feels like no other against your skin.

- Provides positive surface flotation for snorkelers of all ages
- May be easily inflated or deflated as needed
- Quick-release adjustable straps
- Available in small and large sizes



PRO TRAVEL PACK

- High quality 100% liquid silicone Coral mask
- Tempered glass for safety
- Low volume design for easy clearing
- Easy adjusting buckles
- High quality dry-top Coral snorkel with 100% liquid silicone mouthpiece
- Popular Caribe X Full-Foot Fins
- Includes mesh carry bag with shoulder strap



TRAVEL PACK

- High quality 100% liquid silicone Coral mask
- Tempered glass for safety
- Low volume design for easy clearing
- Easy adjusting buckles
- High quality dry-top Coral snorkel with 100% liquid silicone mouthpiece



CORAL™ SET

- High quality 100% liquid silicone Explorer mask
- Tempered glass for safety
- Low volume design for easy clearing
- Easy adjusting buckles



YOUTH SET

- High quality 100% liquid silicone Coral mask
- Tempered glass for safety
- Low volume design for easy clearing
- Easy adjusting buckles
- High quality dry-top Coral snorkel with 100% liquid silicone mouthpiece
- Flex Full-Foot Fins
- Includes mesh carry bag with shoulder strap
- Adult and youth sizes



FEATURES & FUNCTIONS

VEO 100 NX

VEO 180 NX

VEO 250

GEO

PRO PLUS 2

VT3

ATOM 2.0

DATAMASK

VEO 100 NX

Model Type	Wireless, Air Integrated	Wireless, Air Integrated	Wireless, Air Integrated	Wireless, Air Integrated	Wrist Watch	Module	Module
Modes of Operation	Air, Nitrox, Gauge and Free Dive	Air, Nitrox, Gauge and Free Dive	Air, Nitrox, Gauge and Free Dive	Air, Nitrox, Gauge and Free Dive	Air, Nitrox, Gauge and Free Dive	Air, Nitrox, and Gauge	Air, Nitrox, and Gauge
Operating Buttons	2	4	3	2	4	2	1
Mounting Options	Mask	Wristwatch	Wrist/Retractor	Console	Wristwatch	2 or 3 Gauge Console, Wrist, Hose Mount, Retractor, Module	2 or 3 Gauge Console, Wrist, Hose Mount, Retractor, Module
Activation	Water or Push Button	Water or Push Button	Water or Push Button	Water or Push Button	Water or Push Button	Water or Push Button	Water or Push Button
Digital Watch Functions	N/A	Time, Alternate Time, Countdown Timer, Stop Watch, Daily Alarm	N/A	N/A	Time, Alternate Time, Countdown Timer, Stop Watch, Daily Alarm	N/A	N/A
Algorithm Basis	Modified Haldanean / DSAT Database	Modified Haldanean / DSAT Database	Modified Haldanean / DSAT Database	Modified Haldanean / DSAT Database	Modified Haldanean / DSAT Database	Modified Haldanean / DSAT Database	Modified Haldanean / DSAT Database
Conservative Factor Adjustment	YES	YES	YES	NO	YES	NO	NO
Altitude Algorithm Basis	NOAA	NOAA	NOAA	NOAA	NOAA	NOAA	NOAA
O2 Limit Basis	NOAA	NOAA	NOAA	NOAA	NOAA	NOAA	NOAA
Tissue Compartments	12 (5 to 480 minutes)	12 (5 to 480 minutes)	12 (5 to 480 minutes)	12 (5 to 480 minutes)	12 (5 to 480 minutes)	12 (5 to 480 minutes)	12 (5 to 480 minutes)
Automatic Altitude Adjustment	YES	YES	YES	YES	YES	YES	YES
Decompression Capability	10-60 ft/3-18 m	10-60 ft/3-18 m	10-60 ft/3-18 m	10-60 ft/3-18 m	10-60 ft/3-18 m	10-60 ft/3-18 m	10-60 ft/3-18 m
Automatic Safety Stop Prompt	YES	YES	YES	YES	YES	YES	YES
Cylinder Pressure and Air Time Remaining	YES	YES - UP TO 3 TRANSMITTERS	YES - UP TO 3 TRANSMITTERS	YES	NO	NO	NO
Gas Switch / Buddy Pressure Check	NO	YES	YES	NO	NO	NO	NO
Audible Alarm	YES	YES	YES	YES	YES	YES	YES
Ascent Rate Maximum	Adjustable Intensity	30 fpm (<60 ft) 60 fpm (>60 ft) 18 mpm (>18 m)	YES	YES	YES	YES	YES
Backlight	YES	YES	YES	YES	YES	YES	YES
Diver Replaceable Batteries	CR2 / CR2	CR2430 / CR2	CR2430 / CR2	CR2	CR2430	CR2450	CR2450
Battery Type	160 DIVE HOURS	300 DIVE HOURS	300 DIVE HOURS	300 DIVE HOURS	300 DIVE HOURS	300 DIVE HOURS	300 DIVE HOURS
Battery Life*	DATE/TIME	DATE/TIME	DATE/TIME	DATE/TIME	DATE/TIME	DATE/TIME	DATE/TIME
Battery Hot Swap	330 ft/100 m	330 ft/100 m	330 ft/100 m	330 ft/100 m	330 ft/100 m	330 ft/100 m	330 ft/100 m
Calendar / Clock	330 ft/100 m	330 ft/100 m	399 ft/120 m	330 ft/100 m	330 ft/100 m	399 ft/120 m	399 ft/120 m
Operating Depth (Max)	YES	YES	YES	YES	YES	YES	YES
Operating Depth (Free/Gauge)	YES	YES	YES	YES	YES	YES	YES
Time to Fly Countdown	YES	YES	YES	YES	YES	YES	YES
Desat Countdown	YES	YES	YES	YES	YES	YES	YES
High O2 Alarm/Warning	300/240 SOTU/DOU	300/240 SOTU/DOU	300/240 SOTU/DOU	300/240 SOTU/DOU	300/240 SOTU/DOU	300/240 SOTU/DOU	300/240 SOTU/DOU
High PO2 Alarm / Warning	.2 less than user setting	.2 less than user setting	.2 less than user setting	.2 less than user setting	.2 less than user setting	.2 less than user setting	.2 less than user setting
On-Unit Log Capacity	24 DIVES	24 DIVES	24 DIVES	24 DIVES	24 DIVES	24 DIVES	24 DIVES
PC Interface	INCLUDED	INCLUDED	INCLUDED	OPTIONAL	OPTIONAL	OPTIONAL	OPTIONAL
PC Settings Upload	INCLUDED	INCLUDED	INCLUDED	OPTIONAL	OPTIONAL	OPTIONAL	OPTIONAL
Download Memory Capacity	512K**	512K**	512K**	256K**	512K**	256K**	256K**
Pre-Dive Planning Sequence	PUSH BUTTON	PUSH BUTTON	PUSH BUTTON	PUSH BUTTON	PUSH BUTTON	PUSH BUTTON	SCROLL
Alpha-Numeric Message Box	YES	YES	YES	NO	YES	NO	NO
On-Unit Simulator	NO	NO	NO	YES	NO	YES	NO

FEATURES & FUNCTIONS

VEO 100 NX

VEO 180 NX

VEO 250

GEO

PRO PLUS 2

VT3

ATOM 2.0

DATAMASK

VEO 100 NX

Temperature Display	YES	YES	YES	YES	YES	YES	YES
Tissue Loading Bar Graph	YES <td>YES <td>YES <td>YES <td>YES <td>YES <td>YES </td></td></td></td></td></td>	YES <td>YES <td>YES <td>YES <td>YES <td>YES </td></td></td></td></td>	YES <td>YES <td>YES <td>YES <td>YES </td></td></td></td>	YES <td>YES <td>YES <td>YES </td></td></td>	YES <td>YES <td>YES </td></td>	YES <td>YES </td>	YES
Variable Ascent Rate	MESSAGE BOX	MESSAGE BOX	MESSAGE BOX	BAR GRAPH	MESSAGE BOX	BAR GRAPH	BAR GRAPH
No Decompression Time Remaining Display	YES	YES	YES	YES	YES	YES	YES
Air Time Remaining Display	YES	YES	YES	YES	NO	NO	NO
Set "Turn" Pressure Alarm	YES	YES	YES	YES	YES	NO	NO
Set "End" Pressure Alarm	YES	YES	YES	YES	YES	NO	NO
Set F02 (%) Gas 1	AIR, 21-50%	AIR, 21-50%	AIR, 21-50%	AIR, 21-50%	AIR, 21-50%	AIR, 21-50%	AIR, 21-50%
Set F02 (%) Gas 2	N/A	OFF, 21-100%	OFF, 21-100%	N/A	N/A	N/A	N/A
Set F02 (%) Gas 3	N/A	OFF, 21-100%	OFF, 21-100%	N/A	N/A	N/A	N/A
Set Audible Alarm On/Off	YES	YES	YES	YES	YES	YES	NO
Set Max Depth Alarm	YES	YES	YES	YES	YES	NO	NO
Set Elapsed Dive Time Alarm	YES	YES	YES	YES	YES	NO	NO
Set Maximum Nitrogen Tissue Loading Bar Graph Alarm	YES	YES	YES	YES	YES	NO	NO
Set Conservative Factor	YES	YES	YES	NO	YES	NO	NO
Set Dive Time Remaining Alarm	YES	YES	YES	YES	YES	NO	NO
Set Units OI Measurement	YES	YES	YES	YES	YES	YES	YES
Set Time Format (12/24 Hour)	YES	YES	YES	YES	YES	YES	YES
Set Time of Day	YES	YES	YES	YES	YES	YES	YES
Set Date	YES	YES	YES	YES	YES	YES	NO
Set Maximum PO2 Alarm	YES	YES	YES	YES	YES	YES	YES
Set F02 50% Default	YES	YES	YES	YES	YES	YES	YES
Set Backlight	INTENSITY	DURATION	DURATION	DURATION	DURATION	N/A	N/A
Set Safety Stop Time and Depth	YES	YES	YES	NO	YES	NO	NO
Set Sampling Rate (Download)	YES	YES	YES	YES	YES	NO	N/A
Set Digital Gauge Mode On/Off	MODE SELECTION	MODE SELECTION	MODE SELECTION	YES	MODE SELECTION	YES	N/A
Set Water Activation On/Off	YES	YES	YES	YES	YES	YES	YES
Set Free Dive Countdown Timer	YES	YES	YES	N/A	YES	N/A	N/A
Set Free Dive 30 sec. Elapsed Dive Time Alarm	YES	YES	YES	N/A	YES	N/A	N/A
Set Free Dive Max Depth Alarm 1	YES	YES	YES	N/A	YES	N/A	N/A
Set Free Dive Max Depth Alarm 2	YES	YES	YES	N/A	YES	N/A	N/A
Set Free Dive Max Depth Alarm 3	YES	YES	YES	N/A	YES	N/A	N/A

Sampling Rate Options	256K Memory Capacity	512K Memory Capacity
60 seconds	50-60 Hours	100-110 Hours
30 seconds	25-30 Hours	50-55 Hours
15 seconds	12-15 Hours	25-30 Hours
2 seconds	1.5-2 Hours	4-5 Hours
1 second (Free Dive Mode only)	N/A	1.5-2 Hours

*Battery Life: Battery life estimates are based on full-capacity batteries, and continuous usage as described. 7 days per week / 2 dives per day / 1 hour dive time / 2 hour surface interval / 18 hour interval from last dive to the first of the next day. DATAMASK is calculated with the Backlight on continuously.

**Oceanic Personal Dive Computers have user-selectable Sampling Rates that determine when data is sampled and stored for subsequent download to associated PC interface programs. More frequent sampling provides more data per dive yet results in storage of fewer dives for download. Use with Air or Nitrox, with or without air integration, dive profiles, Free Diving activities, and other variables may also affect the number of dives that can be stored.

FEATURES & FUNCTIONS	OUTRIGGER HLT	EXCURSION	PROBE LX	HERA	ISLANDER	OCEANPRO
Type	REAR INFLATION WITH HLT	REAR INFLATION	JACKET	HYBRID	REAR INFLATION	JACKET
Air Cell Material	URETHANE WITH 1000 DENIER CORDURA® COVER	BIOFLEX®	BIOFLEX®	FADELESS 500 DENIER NYLON	FADELESS 500 DENIER NYLON	FADELESS 500 DENIER NYLON
Shoulder Panel Material	1000 DENIER CORDURA®	1000 DENIER CORDURA®	1000 DENIER CORDURA®	1000 DENIER CORDURA®	1000 DENIER CORDURA®	1000 DENIER CORDURA®
Pocket Panel Material	1000 DENIER CORDURA®	1000 DENIER CORDURA®	1000 DENIER CORDURA®	1000 DENIER CORDURA®	1000 DENIER CORDURA®	1000 DENIER CORDURA®
Reflective Piping	NO	YES	YES	NO	YES	NO
Main Pockets / Closure	ZIPPER	DROP DOWN / ZIPPER	ZIPPER	ZIPPER	ZIPPER	2 / VELCRO®
Accessory Pockets / Closure	N/A	N/A	ZIPPER	N/A	N/A	N/A
Max Dumpable Integrated Weight	20 LBS.	20 LBS.	20 LBS.	20 LBS.	14 LBS.	20 LBS.
Max Non-Dumpable Rear Weight Pockets	10 LBS.	10 LBS.	10 LBS.	10 LBS.	10 LBS.	(Optional) 10 LBS.
Padded Backpack	YES	YES	YES	YES	YES	YES
Lumbar Support	YES	YES	YES	NO	NO	NO
Carrying Handle	YES	YES	YES	YES	YES	YES
Tank Positioning Strap	YES	YES	YES	YES	YES	YES
Molded Tank Cradle / Anti-Slip Pad	YES	YES	YES	YES	YES	YES
Stainless Steel D-rings	6	5	7	6	2 CARBINERS WITH 16 ATTACHMENT POINTS	N/A
Plastic D-rings	2	N/A	N/A	N/A	N/A	8
Sternum Strap	ADJUSTABLE POSITION	ADJUSTABLE POSITION	ADJUSTABLE POSITION	ADJUSTABLE POSITION	ADJUSTABLE POSITION	FIXED
Depth Compensating Cummorbund	YES	YES	YES	YES	YES	NO
Right Shoulder Pull-Ball Exhaust	YES	NO	YES	YES	NO	NO
Front Operated Rear Pull-Ball Exhaust	NO	NO	YES	YES	NO	NO
Twin Cylinder Band Adapter	NO	OPTIONAL	OPTIONAL	NO	NO	NO
Integrated Retractor Mount	YES	YES	YES	YES	YES	NO
Spinner Knife Mount	YES	YES	YES	YES	YES	NO
Crotch Strap	NO	OPTIONAL	NO	NO	NO	NO
Air XS 2 Alternate Inflator	OPTIONAL	OPTIONAL	OPTIONAL	OPTIONAL	OPTIONAL	OPTIONAL
Weight (size: Large)	9.5 LBS.	7.5 LBS.	9.2 LBS.	7 LBS.	7 LBS.	6.7 LBS.
Lift Capacity						
XS				26 LBS.		20 LBS.
SM	35 LBS. + 15 LBS. HLT	45 LBS./OPTIONAL 58 LBS.	26 LBS.	32 LBS.	26 LBS.	26 LBS.
MD	35 LBS. + 15 LBS. HLT	45 LBS./OPTIONAL 58 LBS.	30 LBS.	38 LBS.	26 LBS.	34 LBS.
LG	45 LBS. + 15 LBS. HLT	45 LBS./OPTIONAL 58 LBS.	40 LBS.	46 LBS.	30 LBS.	41 LBS.
XL	45 LBS. + 15 LBS. HLT	45 LBS./OPTIONAL 58 LBS.	48 LBS.		30 LBS.	48 LBS.
XXL			54 LBS.		30 LBS.	

FEATURES & FUNCTIONS	DELTA 4	GT 3	ALPHA 8	ALPHA 8 SPORT	SMIVEL OCTO	SLIMLINE 2	AIR XS 2
Valve Type	DEMAND	DEMAND	DEMAND	DEMAND	DEMAND	DEMAND	DEMAND
Adjustment	KNOB/PRE-ONE SWITCH	KNOB	N/A	N/A	N/A	N/A	N/A
Balancing System	MECHANICAL	MECHANICAL	N/A	N/A	N/A	N/A	N/A
Integrated Purge Button	YES	YES	YES	YES	YES	YES	YES
Mouthpiece	ORTHODONTIC	ORTHODONTIC	ORTHODONTIC	ORTHODONTIC	ORTHODONTIC	ORTHODONTIC	ORTHODONTIC
Nitrox Compatibility	STANDARD TO 40%	STANDARD TO 40%	STANDARD TO 40%	STANDARD TO 40%	STANDARD TO 40%	STANDARD TO 40%	STANDARD TO 40%
Ambidextrous	NO	NO	NO	YES	NO	NO	NO
Integrated Swivel	YES	NO	NO	YES	YES	NO	NO
Weight (without hose)	6.8 OUNCES	5.8 OUNCES	6 OUNCES	6 OUNCES	5.8 OUNCES	5.1 OUNCES	7.9 OUNCES
Dimensions (front profile)	2.67 INCHES	2.67 INCHES	2.9 INCHES	2.9 INCHES	3 INCHES	3.4 INCHES	3.9 INCHES
Minimum Cracking Effort	DIVER ADJUSTABLE	DIVER ADJUSTABLE	1.1 CIW	1.1 CIW	1.5 CIW	1.5 CIW*	1.5 CIW*
Factory Set Inhalation Effort	0.0 - 2.5 CIW	0.0 - 2.5 CIW	1.2 - 1.4 CIW	1.2 - 1.4 CIW	1.5 - 2.0 CIW	1.5 - 2.0 CIW	1.6 - 2.2 CIW
Work of Breathing	.90	.98	1.23	1.47	2.17	2.76	2.86
First Stage	FDX-10 DVT	CDX-5 DVT	PX-3 DVT	SP-5	N/A	N/A	N/A
Limited Lifetime Free Parts Replacement Program	YES	YES	YES	YES	YES	YES	YES

FIRST STAGE	FDX-10 DVT	CDX-5 DVT	PX-3 DVT	SP-5
Valve Type	BALANCED DIAPHRAGM	BALANCED DIAPHRAGM	BALANCED PISTON	UNBALANCED PISTON
Primary Material	FORGED MARINE BRASS	MARINE BRASS	MARINE BRASS	MARINE BRASS
Low Pressure Ports	4	4	5	4
High Pressure Ports	2	2	2	1
DVT (Dry Valve Technology)	YES	YES	YES	OPTIONAL
Nitrox Compatibility	STANDARD TO 40%	STANDARD TO 40%	STANDARD TO 40%	STANDARD TO 40%
DIV Fitting	OPTIONAL	OPTIONAL	OPTIONAL	OPTIONAL
Environmental Protection	YES	YES	NO	YES
Weight	28 OUNCES	29 OUNCES	29 OUNCES	26 OUNCES
Factory Set Intermediate Pressure Range	138-142 PSI	138-142 PSI	140-145 PSI	140-145 PSI
Pressure Drop	9 PSI	20.1 PSI	19.5 PSI	13 PSI
Limited Lifetime Free Parts Replacement Program	YES	YES	YES	YES

WORK OF BREATHING

Did you know that it costs energy to breathe? The amount of energy your regulator requires to move each liter of air is called work of breathing (WOB). Lower work of breathing equals lower effort required to breathe and increased comfort and safety during a dive.

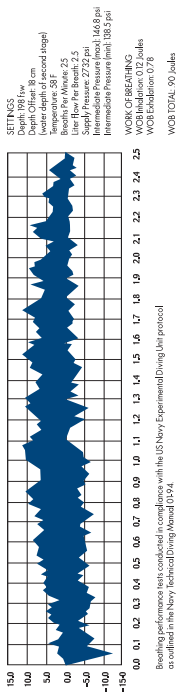
How to Read Work of Breathing Charts

The computer-generated breathing machine chart presented above represents a regulator's performance per standards established by the U.S. Navy's Experimental Diving Unit. Tests are conducted at 198 feet with approximately 3000-psi supply pressure, 25 breaths per minute of 2.5 liters each.

(1) Inhalation - The chart shows one complete breath cycle, starting with inhalation on the left and continuing along the bottom to the right, staying mostly below 0.0; thus the inhalation work of breathing is reported in negative numbers.

(2) Exhalation - The exhalation effort begins on the right and runs across the top to the left. These are all positive numbers since a diver (or the machine in this case) is blowing out (exhaling) rather than inhaling.

(3) WOB - The total area inside the loop formed by the two lines is what the computer analyzes to calculate the regulator's total work of breathing - the amount of energy the regulator requires to move each liter of air.



Breathing performance tests conducted in accordance with the US Navy Experimental Diving Unit protocol as modified in the Navy Technical Diving Manual 0164.

SETTINGS:
Depth Offset: 30 cm
Depth: 198 feet
Breath In Volume: 2.5 L
Breath In Rate: 25
Supply Pressure: 27.5 psi
Intermediate Pressure: 140 psi
WOB: 0.56 Joules
WOB Inhalation: 0.32 Joules
WOB Exhalation: 0.78 Joules
WOB TOTAL: 0.90 Joules

AUTHORIZED OCEANIC DEALERS

HAND PICKED BY US TO SERVE YOU

When you visit an Authorized Oceanic Dealer, you'll get the personal attention you need to select the equipment and accessories that truly fit you and your diving style. Because they understand that when the gear's right, you'll dive more often and have a lot more fun every time you go out.

Their commitment to enhancing your experience even goes beyond the sale, from tuning your gear before you leave the store to mechanical check-ups that ensure your gear dives like the day you bought it.

But most of all, Authorized Oceanic Dealers simply live and breathe diving. It's a dedication that you won't find anywhere else.

Want to see for yourself why an Authorized Oceanic Dealer is the right place to find the right diving equipment for you? Go to www.BuyOceanic.com to find an online or local dealer near you.

Armed with the largest selection of Oceanic products and staffed with the most knowledgeable diving professionals, Authorized Oceanic Dealers also offer these exclusive benefits:

30-DAY SATISFACTION GUARANTEE

This guarantee warrants that at any time during the first 30 days of purchase, your Oceanic product fails to meet your expectations, that product may be exchanged by a participating Authorized Oceanic Dealer. No questions asked.

LIFETIME REGULATOR PARTS REPLACEMENT PROGRAM

Register your regulator purchased through an Authorized Oceanic Dealer to be automatically enrolled in our LIFETIME REGULATOR PARTS REPLACEMENT PROGRAM, which offers FREE replacement parts for as long as you own your Oceanic Regulator, and have it serviced annually by an Authorized Oceanic Dealer Technician.

XPRESS REPLACEMENT POLICY

Should anything go wrong with your Oceanic product within the first 30 days of purchase, your Authorized Oceanic Dealer is authorized to immediately replace the product over-the-counter. No questions asked.

ONLINE DIVE LOCKER

Register your product purchases online through an Authorized Oceanic Dealer to create your own Dive Locker, a secure area on our web site where you may access and maintain your personal information. Register additional Oceanic product purchases, participate in new product development surveys, update contact information, update Oceanic News preferences, create a Virtual Dive Log, maintain service records, receive service reminders, and more! Most importantly, should Oceanic issue a safety related notice regarding your product, you will be the first to know.

During the setup process or at any time thereafter, you choose exactly what you wish to hear about from Oceanic – or nothing at all if that is your preference. We are committed to respecting your privacy – your email address and all information submitted is considered strictly confidential and is not sold or used for any other purpose.

OCEANIC HEADQUARTERS

2002 Davis Street, San Leandro
California, 94577 USA
800-435-3483
www.OceanicWorldwide.com

OCEANIC GERMANY / N. EUROPE
Am Mittleren Moos 36
86167 Augsburg, Germany
+49 (0) 821 810342 0
www.Oceanic.de

OCEANIC ASIA-PACIFIC
298 Beach Road, Unit 01-43
Singapore 199554
+65 6391 1420
www.OceanicAsia.com.sg

OCEANIC AUSTRALIA
4 Scotch Court
Rosebud, Victoria 3939, Australia
61 3 5986 0100
www.OceanicAUS.com.au

OCEANIC UNITED KINGDOM
Pelagic House
Flightway Dunkeswell
Honiton, Devon EX14 4RB
United Kingdom
(44) 1404 891819
www.OceanicUK.com

OCEANIC ITALY/S. EUROPE
Via G. Adamoli, 465/n
16141 Genova, Italy
Phone: +39 010 8382006
+39 010 8364166
+39 010 8364786
hello@oceanicse.it

OCEANIC JAPAN
1-19-5 Motomiya Turumi-Ku
Yokohama Kanagawa-Pref,
Japan 230-0004
03-5651-9371
www.Oceanic-jp.com

In addition to our US Headquarters and 6 International Affiliate Companies, Oceanic's superior products and services are available through more than 30 International Distributors and thousands of Authorized Dealers worldwide including: the Benelux nations, Brazil, Canada, Chile, China, Colombia, Cyprus, Egypt, Ecuador, France, Greece, Hawaii, Hong Kong, Iceland, Israel, Korea, Lebanon, Mexico, Micronesia, New Zealand, Norway, Philippines, Poland, Portugal, Russia, Scandinavia, South Africa, Spain, Switzerland, Taiwan, Thailand, Turkey, Ukraine, United Arab Emirates, Venezuela and more. Please visit our web site for a complete listing and contact information.



ISO 9001:2000 is a distinguished global standard of quality management systems, not only in design and manufacturing, but virtually all aspects of company operations. Oceanic and its family of companies are committed to exceeding the requirements for ISO 9001:2000 certification.



In European markets, certain product categories are required to pass rigorous testing standards. All Oceanic products that require testing have surpassed the CE standards.

While every effort was made to ensure that the information contained in this catalog was accurate at the time of printing, designs, features, component parts and colors are all subject to change. The Oceanic products in this catalog may be covered by one or more United States patents. Oceanic enforces its patented technology actively and will aggressively defend any infringement. No part of this catalog may be reproduced in whole or in part by any medium without the express written consent of Oceanic.